

# Portable Handheld Dataloggers AD128 Series

AD128, \$799, shown smaller than actual size (Laptop not included)



A/IN



IBM PC



D/O

Model AD128  
**\$799**

- ✓ **Compact, Lightweight**
- ✓ **Records Voltage or Temperature**
- ✓ **Fast, Easy Setup**
- ✓ **Event Based Recording Options**
- ✓ **10 Year Battery Backup**
- ✓ **Software Runs on WIN95/98/NT/2000/XP**

The AD128 is a complete stand-alone data acquisition system that includes a pocket-sized logging unit, standard Windows configuration and analysis software and all other accessories required. This system provides a method for recording directly from process sensors, instruments and other circuits with output voltages in the range of 0 to 5 volts or 0 to 10 volts and Omega's Series 400 thermistor temperature probes. These dataloggers are ideal

for applications including laboratory data acquisition, materials testing, field data collection, process monitoring and control and quality auditing.

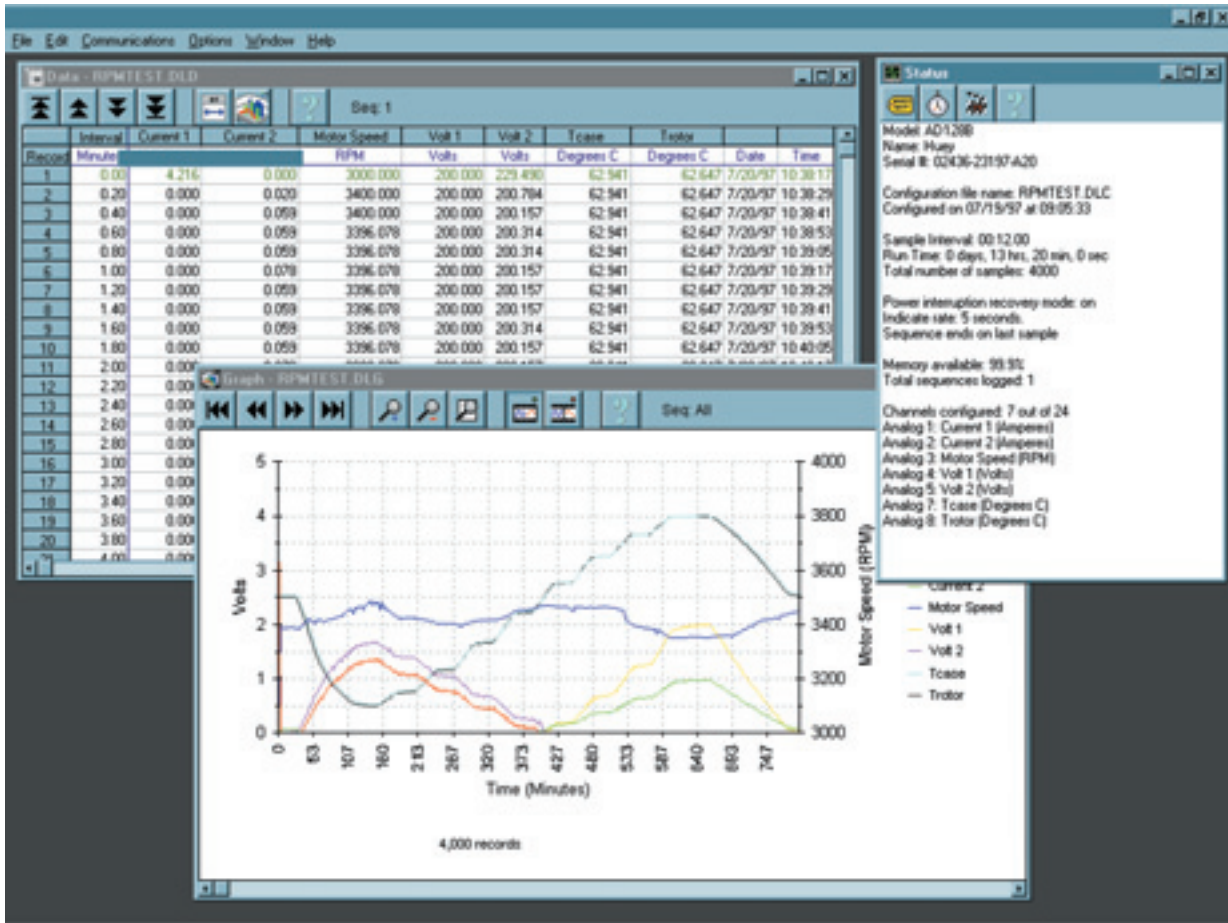
The AD128 datalogger will operate from a 9 V battery for up to three months while recording from all 8 analog and 16 digital inputs. Recording can be as slow as one reading every 99 minutes or as fast as 500 per second, sampling all inputs simultaneously. Optionally, recording may be triggered by a specified condition on the input signal levels, eliminating unwanted information.

Sample records are time stamped with the time and date of the built-in real-time clock. The 10 year battery-backed data memory and software interlock ensures that data won't be lost or accidentally erased. All inputs are protected to  $\pm 20$  volts.

A full-featured Windows based configuration and analysis software package is shipped with each system and enables immediate use

of the system right out of the box. This form-based software is extremely intuitive, requires no programming, and is used to setup the datalogger and download logged data. Logging parameters (sample interval, run time, and active channels) are configured via the software and then sent to the AD128 datalogger through the PC's serial port. After it is configured, the datalogger may be disconnected from the PC and operated in the stand-alone mode. A Start/Stop button on the datalogger begins and ends the data collection process. When logging is completed the datalogger is again connected to the PC's serial port through which data may be transferred from the datalogger to the PC. Once data has been recorded, a single mouse click retrieves data into a built-in spreadsheet for easy viewing. From the spreadsheet, data can be copied to the Windows clipboard or exported to a file to be brought into other programs. The software also provides the ability to view and print a graphic representation of the data.





Windows software (included) displays data in graphical or tabular format

Software features include:

### Analysis

- ✓ Statistics - Min, Max, Avg, mean, standard deviation, regression
- ✓ Scroll
- ✓ Zoom
- ✓ View all 130,000 data points on a single graph
- ✓ Simultaneous view of multiple tests

### Step between tests

### Presentation

- ✓ Y versus Time graphs
- ✓ X-Y graphs
- ✓ 2D, 3D plots
- ✓ Backdrop and shading
- ✓ Footnotes and annotation
- ✓ Scaling to any linear unit of measure

### Import/Export

- ✓ Copy/Paste to other Windows Applications
- ✓ Save graphs in Windows metafile (.WMF) and bitmap (.BMP) formats or the proprietary format for reloading and editing
- ✓ Save data in ASCII format which is compatible with most spreadsheet, database and analysis software programs

Model No.	No. of Analog Input Channels		Number of Digital Inputs
	Voltage	Temperature	
AD128	8 (0 to 5 V)	-	16
AD128-10	8 (0 to 10 V)	-	16
AD128-T8	-	8	8
AD128-T2	6 (0 to 5 V)	2	14
AD128-T6	2 (0 to 5 V)	6	10
AD128-10T2	6 (0 to 10 V)	2	14
AD128-10T6	2 (0 to 10 V)	6	10

Each AD128 datalogger is supplied with a 25-conductor sampling interface cable. This cable has a DB25 connector on one end that plugs onto the AD128 datalogger. The other end of this cable terminates in color-coded stripped leads that can be connected to the input signals to be monitored. The AD128-TERM screw terminal panel is an optional wiring accessory that can be used for input signal connection. The AD128-TERM brings out all the pins on the datalogger's DB25 input connector to a convenient exterior screw terminal wiring panel. The AD128-TERM connects to the AD128 datalogger via the AD128-CABLE interconnecting cable.

## Specifications

### GENERAL

**Data Storage:** 130,000 samples (16 channels of digital data make up 2 samples)

**Sampling Interval:** 500 Hz (0.002 sec) to 99 min (all channels)

**Data Memory Battery Life:** 10 years

**Internal Power Supply:** 9 V battery included

**External Power Supply:** 9 Vac adapter

**Operating Current:** 300  $\mu$ A standby, 4 mA while recording, 10 mA for LED indication (sampling, can be disabled)

**Operating Temperature:** -10 to 50°C (14 to 122°F)

**Storage Temperature:** -20 to 70°C (-4 to 158°F)

**Communications:** RS-232; 9600 baud, 8 data bits, no parity, 1 stop

bit, 9-pin female connection

**Dimensions:** 5.8"H x 3.6"W x 1.3"D (14.7 x 9.1 x 3.3 mm)

**Weight:** 226 g (8 oz)

### Analog Voltage Inputs

**Input Range:** 0 to 5 V, 0 to 10 V

**Resolution:** 20 mV on 0 to 5 V range, 40 mV on 0 to 10 V range

**Accuracy:**  $\pm$ 10 mV on 0 to 5 V range,  $\pm$ 20 mV on 0 to 10 V range

**Input Bias Current:**  $\pm$ 10  $\mu$ A

### TEMPERATURE INPUTS

**Sensor Type:** Any Omega Series 400 thermistor (see Thermistor Input Types & Ranges Table)

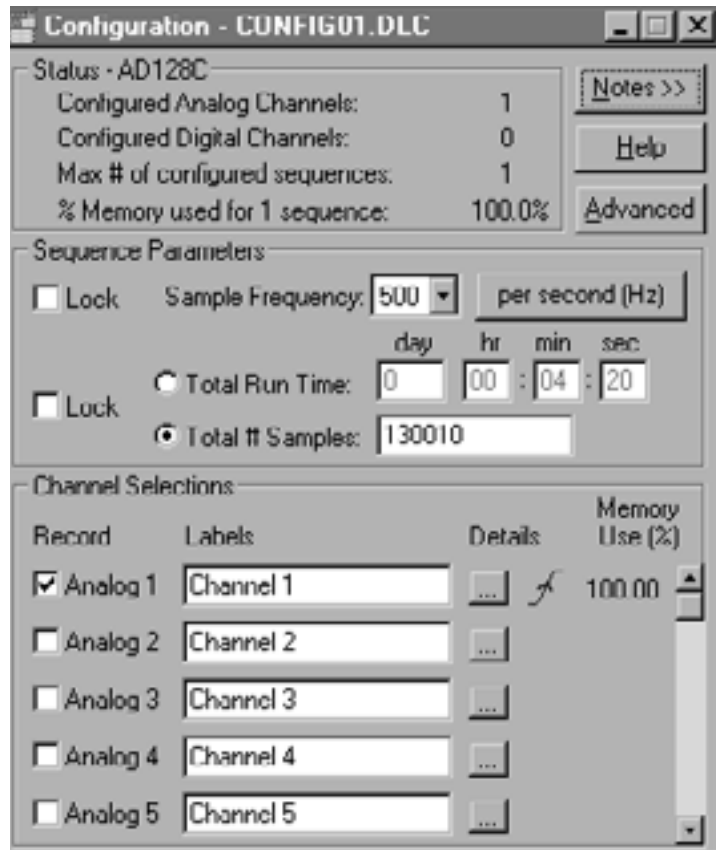
### DIGITAL INPUTS

**Input Level:** Up to 10 V recommended, 100K pull-ups on channels 1 to 8

**"High" Threshold:** 3.5 V max

**"Low" Threshold:** 1.0 V min

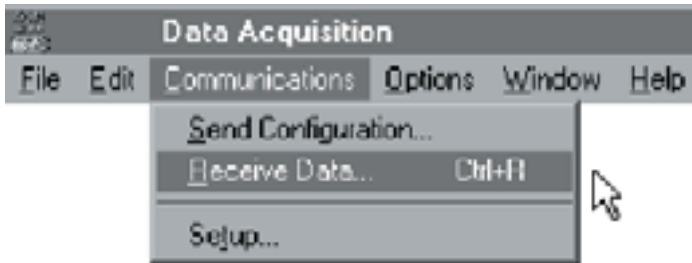
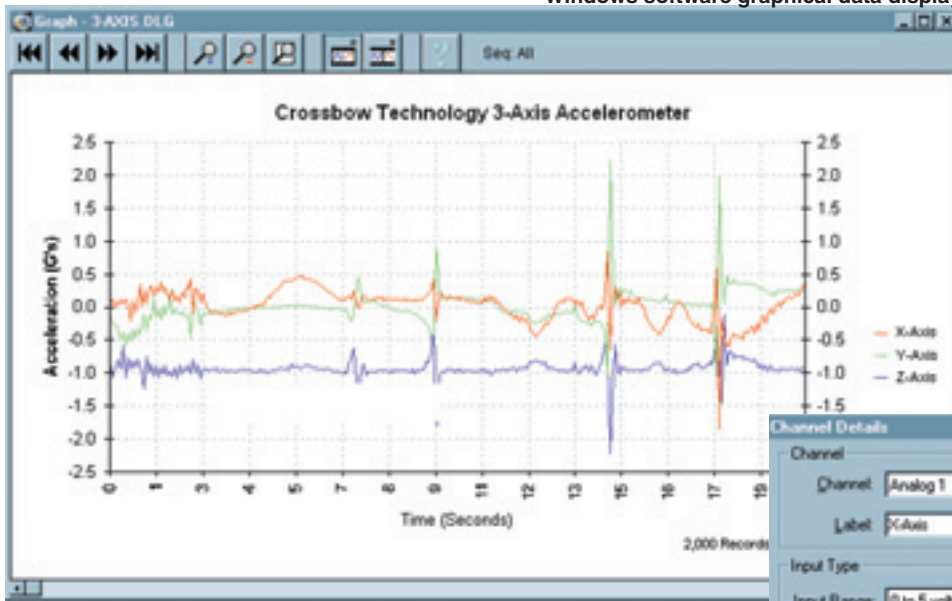
**Input Bias Current:**  $\pm$ 10  $\mu$ A



Window software datalogger configuration

Thermistor Input Types & Ranges					
Thermistor Type	44004, 44033	44005, 44030	44007, 44034	44006, 44031	44008, 44032
Nominal Resistance at 25 °C, $\Omega$	2252	3000	5000	10000	30000
Temperature, °C	Accuracy/Resolution (°C)				
-40	2.07/0.55	2.71/0.69			
-20	0.75/0.32	0.94/0.36	1.45/0.48	2.33/0.75	
0	0.46/0.31	0.50/0.31	0.65/0.32	1.03/0.44	2.80/0.90
20	0.58/0.52	0.53/0.45	0.50/0.38	0.64/0.40	1.29/0.54
40	1.05/1.03	0.86/0.83	0.65/0.59	0.57/0.46	0.74/0.42
60	2.26/2.25	1.76/1.75	1.17/1.14	0.77/0.71	0.61/0.46
80		3.59/3.59	2.28/2.27	1.22/1.19	0.69/0.62
100				2.09/2.07	0.99/0.95
120				3.39/3.38	1.63/1.61
150					3.35/3.34

Windows software graphical data display



Windows software datalogger communication's menu



Windows software channel configuration

**ALL MODELS AVAILABLE FOR FAST DELIVERY!**

**To Order (Specify Model Number)**

Model No.	Price	Description
AD128	\$799	8 channel voltage logger, 0 to 5 V
AD128-10	799	8 channel voltage logger, 0 to 10 V
AD128-T8	799	8 channel temperature logger
AD128-T2	799	8 channel voltage/temperature logger (6 voltage channels, 0 to 5 V; 2 temperature channels)
AD128-T6	799	8 channel voltage/temperature logger (2 voltage channels, 0 to 5 V; 6 temperature channels)
AD128-10T2	799	8 channel voltage/temperature logger (6 voltage channels, 0 to 10 V; 2 temperature channels)
AD128-10T6	799	8 channel voltage/temperature logger (2 voltage channels, 0 to 10 V; 6 temperature channels)
CS-3777	50	Reference Book: Real-Time Digital Signal Processing

Each AD128 datalogger includes software, RS-232 communications cable with DB9F termination, sampling interface cable, ac adapter, 9 volt battery, and complete operator's manual.

**Ordering Example:** AD128-10T6 voltage/temperature logger with 2 voltage channels, 0 to 10 V input, and 6 temperature channels, OMEGACARE<sup>SM</sup> 1 year extended warranty for AD128-10T6 (adds 1 year to standard 1 year warranty), AD128-TERM screw terminal board, and AD128-CABLE interconnecting cable, \$799 + 79 + 45 + 18 = \$941.

**Accessories/Options**

Model No.	Price	Description
AD128-TERM	\$45	3.5" X 2" screw terminal board (requires AD128-CABLE)
AD128-CABLE	18	6 ft DB25 -DB25 cable for use with AD128-TERM
AD128-ENC	90	NEMA 12 enclosure for any AD128 datalogger, 14 ga steel, powder coated, hinged, dual quick-release latches, 6" x 8" x 3.5", with mounting panel
ON-901-44004	36	Vinyl coated thermistor probe assembly*
ON-905-44004	55	Epoxy coated thermistor probe mounted in open stainless steel housing for air temperature measurement*
ON-910-44004	55	Stainless steel thermistor probe assembly with 1/8" NPT fitting*



#### UNITED STATES

[www.omega.com](http://www.omega.com)  
1-800-TC-OMEGA  
Stamford, CT.

#### CANADA

[www.omega.ca](http://www.omega.ca)  
Laval(Quebec)  
1-800-TC-OMEGA

#### GERMANY

[www.omega.de](http://www.omega.de)  
Deckenpfronn, Germany  
0800-8266342

#### UNITED KINGDOM

[www.omega.co.uk](http://www.omega.co.uk)  
Manchester, England  
0800-488-488

#### FRANCE

[www.omega.fr](http://www.omega.fr)  
Guyancourt, France  
088-466-342

#### CZECH REPUBLIC

[www.omegaeng.cz](http://www.omegaeng.cz)  
Karviná, Czech Republic  
596-311-899

#### BENELUX

[www.omega.nl](http://www.omega.nl)  
Amstelveen, NL  
0800-099-33-44



## More than 100,000 Products Available!

### • Temperature

Calibrators, Connectors, General Test and Measurement Instruments, Glass Bulb Thermometers, Handheld Instruments for Temperature Measurement, Ice Point References, Indicating Labels, Crayons, Cements and Lacquers, Infrared Temperature Measurement Instruments, Recorders Relative Humidity Measurement Instruments, RTD Probes, Elements and Assemblies, Temperature & Process Meters, Timers and Counters, Temperature and Process Controllers and Power Switching Devices, Thermistor Elements, Probes and Assemblies, Thermocouples Thermowells and Head and Well Assemblies, Transmitters, Wire

### • Flow and Level

Air Velocity Indicators, Doppler Flowmeters, Level Measurement, Magnetic Flowmeters, Mass Flowmeters, Pitot Tubes, Pumps, Rotameters, Turbine and Paddle Wheel Flowmeters, Ultrasonic Flowmeters, Valves, Variable Area Flowmeters, Vortex Shedding Flowmeters

### • pH and Conductivity

Conductivity Instrumentation, Dissolved Oxygen Instrumentation, Environmental Instrumentation, pH Electrodes and Instruments, Water and Soil Analysis Instrumentation

### • Data Acquisition

Auto-Dialers and Alarm Monitoring Systems, Communication Products and Converters, Data Acquisition and Analysis Software, Data Loggers Plug-in Cards, Signal Conditioners, USB, RS232, RS485 and Parallel Port Data Acquisition Systems, Wireless Transmitters and Receivers

### • Pressure, Strain and Force

Displacement Transducers, Dynamic Measurement Force Sensors, Instrumentation for Pressure and Strain Measurements, Load Cells, Pressure Gauges, Pressure Reference Section, Pressure Switches, Pressure Transducers, Proximity Transducers, Regulators, Strain Gages, Torque Transducers, Valves

### • Heaters

Band Heaters, Cartridge Heaters, Circulation Heaters, Comfort Heaters, Controllers, Meters and Switching Devices, Flexible Heaters, General Test and Measurement Instruments, Heater Hook-up Wire, Heating Cable Systems, Immersion Heaters, Process Air and Duct, Heaters, Radiant Heaters, Strip Heaters, Tubular Heaters