

instruNet World Plus

Data Acquisition and Control Software for Use With instruNet Data Acquisition Systems

iNET-iWPLUS

\$230

Basic Unit



- ✓ Upgrade Standard instruNet World Software
- ✓ Process Control Capability
- ✓ Real-Time Data Acquisition and Display
- ✓ Custom Instrument Panels
- ✓ Includes Direct to Excel Program
- ✓ Compatible with instruNet Hardware

instruNet World Plus is a reasonably priced yet powerful and easy-to-use data acquisition software program for Windows 95/98/NT/2000/XP (not Macintosh). It enables one to digitize, plot, control, analyze, and save to disk A/D, D/A, and digital I/O data from instruNet hardware. Additionally, it enables one to define their own instrument front panel with buttons, popup menus, edit fields, dynamic text, text editor regions, and waveform graphs, as illustrated in Figure 1 on this page.

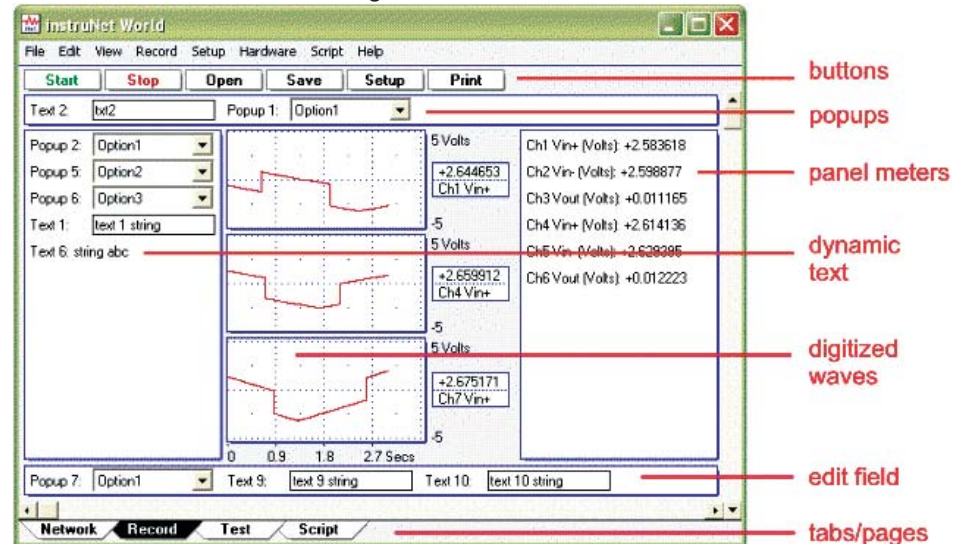
instruNet World Plus is programmed with a simple script language that can define tasks such as control loops. For example, one can type "Dac1 = OnOff (Ain1, 3)" to define D/A #1 as a function of A/D #1.

instruNet World Plus software adds valuable features to the standard instruNet World (not Plus) software which is included with instruNet hardware.

Generate Analog and Digital Output Waveforms

Define an analog or digital output channel mathematically (e.g. sine wave, square wave, pulse train, etc) that updates in real-time (e.g. every 100 ms).

Custom Instrument Front Panel - Figure 1



Run Feedback/Control Loops

Define an analog or digital output channel as a real-time function of analog and/or digital input channels (e.g. PID control, on/off control, etc).

Create a Custom Instrument

Create buttons, popup menus, edit fields, dynamic text fields, text edit regions, and pages to build a custom application program.

Powerful Script Programming Language

instruNet World Plus is programmed with a simple BASIC-like script language that provides many feedback/control, waveform generation, math, file, hardware, and user interface functions as summarized below:

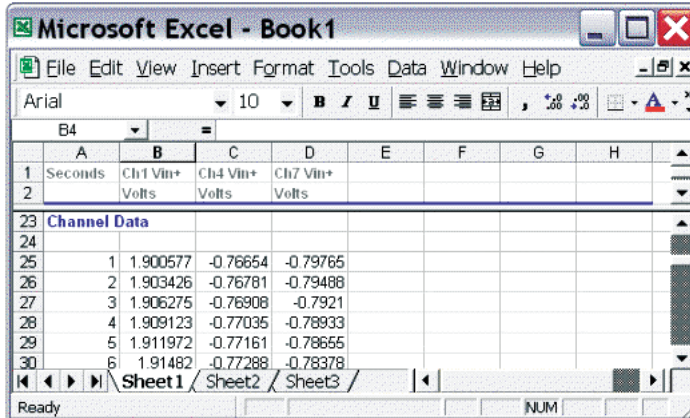
add, subtract, multiply, divide, Modulo, cos, sin, tan, acos, atan, atan2, cosh, sinh, tanh, bAnd, bOr, bEor, shift left, shift right, 1's complement, getbit, setbit, clearbit, And, Or, Not, <, >, <=, >=, ==, !=, absolute value, eth power, natural log, log10, reciprocal, square, square root, x to yth power, integer, round down, round up, fractional part, minimum, maximum, average,

string length, string compare, string search, string to ascii, Sinewave, TriangleWave, SquareWave, PID, PIDL, OnOff, Limit, Alarm, For Next, Goto, If/Elseif/Endif, If...then, Loop, Synchronize, While, Close, Create, Flush, Open, SetMasterDir, SetPointer, SetSize, Write, Read, Debug, End, Execute, Calibrate Hardware, Calibrate Gages, Calibrate Bridges, Calibrate VDividers, Calibrate Vinit, Calibrate Init, Read Channel, Digitize, SetChannel, SetChannelBit, SetField, SetTrigger, Table, Append, Copy, Clear, Define, Delete, Alert, Beep, Delay, Erase, Print, Question, NewPage, NewButton, Press, Select, Show/Hide page, Show/Hide button, CtoF, FtoC, CtoK, FtoK, KtoF

instruNet World Plus Includes Digitize Direct To Excel Software

instruNet World Plus includes the Digitize Direct To Excel program, which populates an Excel (Version >= 8.0, Office >= 97) spreadsheet, (as shown in Figure 2) while digitizing.

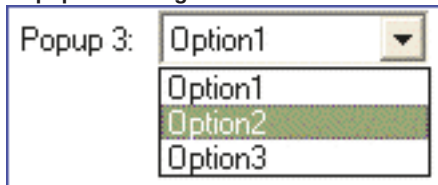
Direct to Excel - Figure 2



Create Popup Menus

Front panel popup menus allow the selection of one of several choices in a list, as illustrated in Figure 3. One line of script code reads or sets the position of the popup (i.e. 1 refers to the upper-most item, 2 the one below it, etc). The position, label, and list options are easily set.

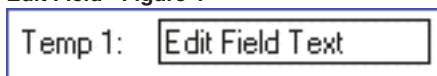
Popup Menu - Figure 3



Create Edit Fields

Front panel edit fields allow one to select, view and edit segments of text, as shown in Figure 4. One line of script code reads or sets the text in the same way one would read or write to a string variable. The position, label, and initial text are easily set.

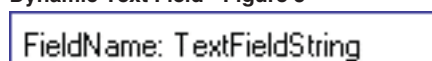
Edit Field - Figure 4



Create Dynamic Text Fields

Front panel dynamic text fields allow one to view non-editable segments of text, as shown in Figure 5. One line of script code sets the text in the same way one would write to a string variable. The position, label, and initial text are easily set.

Dynamic Text Field - Figure 5



Create Buttons

One can easily create buttons that execute script code when pressed (e.g. "Button 1" shown in Figure 6). The position, label, and script text are easily set.

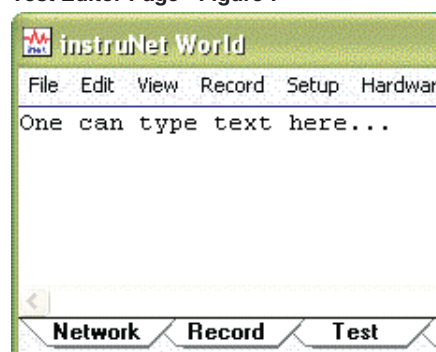
Create Buttons - Figure 6



Create Text Editor Pages

In instruNet World Plus, a "page" is similar to a "sheet" in Microsoft Excel. One clicks on a tab at the bottom of the window (note the tabs in Figure 7) to show a different set of front panel items (e.g. popup menus, text editor, edit fields, etc). For example, in a simple case, one might create a page called "Help" that when selected, displays documentation on how to use the instrument. Figure 7 shows 2 user defined pages, labeled "Page 1" and "Page 2", where Page 1 is currently selected and contains a text editor region that shows the text "One can type text here...".

Test Editor Page - Figure 7



Save Waves to Excel

instruNet World Plus provides a menu command called "Save Waveforms To Excel" that saves all waves into one large text file that can be loaded by Microsoft Excel, post-acquisition, where each wave is given its own column.

Print Waves and Text on Hard Copy Printer

Print text and waveforms directly to a printer.

Display Time of Day Under Waves

Display waveforms relative to the Date and Time of Day. For example, in Figure 8, the first grid corresponds to June 11, 2003, 6:12pm + 31 seconds. Without instruNet World Plus waves are always displayed relative to the start of digitization.

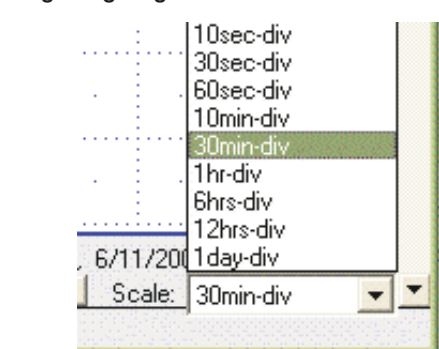
Time of Day Under Waves - Figure 8



Adjust Horizontal Scale While Digitizing

A front panel popup menu (refer to Figure 9) adjusts the displayed horizontal scale (i.e. time per plotted horizontal division) while digitizing. In the standard version of the instruNet World software (not Plus), this is set automatically, or via the Record Setup dialog.

Adjust Time of Day While Digitizing - Figure 9



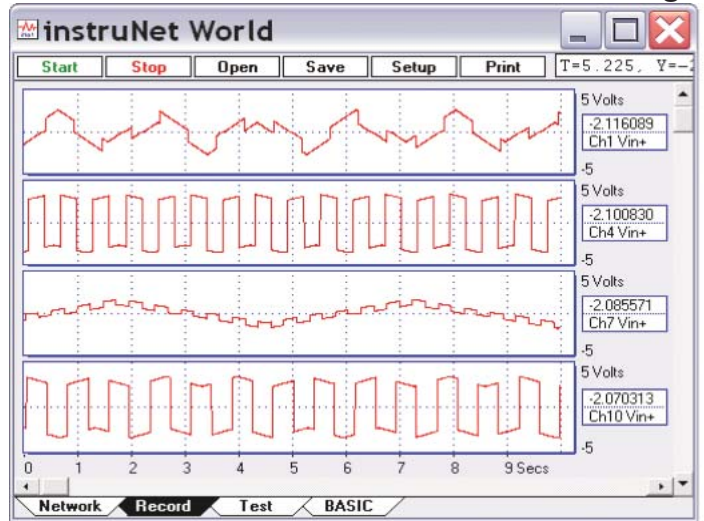
Copy the Setup of One Channel to Many Channels

Setting up many channels manually can be somewhat laborious. instruNet World Plus automates this with a command that copies the setup of one channel (e.g. to a thermocouple, strain gage, etc) to multiple other channels.

Network Page

Channel	Addr	Value Input	Units	% sRate	Sensor
Ch1 Vin+	1/1/1	-2.177124	Volts	100	Voltage
Ch4 Vin+	1/1/1	-2.161865	Volts	100	Voltage
Ch7 Vin+	1/1/1	-2.146606	Volts	100	Voltage
Ch10 Vin+	1/1/1	-2.131348	Volts	100	Voltage
Ch13 Vin+	1/1/1	-2.116089	Volts	100	Voltage
Ch16 Vin+	1/1/1	-2.100830	Volts	100	Voltage
Ch19 Vin+	1/1/1	-2.085571	Volts	100	Voltage
Ch22 Vin+	1/1/1	-2.070313	Volts	100	Voltage
Ch2 Vin-	1/1/1	-2.055054	Volts	100	Voltage
Ch5 Vin-	1/1/1	-2.039795	Volts	100	Voltage
Ch8 Vin-	1/1/1	-2.024536	Volts	100	Voltage
Ch11 Vin-	1/1/1	-2.009277	Volts	100	Voltage
Ch14 Vin-	1/1/1	-1.994019	Volts	100	Voltage
Ch17 Vin-	1/1/1	-1.978760	Volts	100	Voltage
Ch20 Vin-	1/1/1	-1.963501	Volts	100	Voltage
Ch23 Vin-	1/1/1	-1.948242	Volts	100	Voltage
Ch3 Vout	1/1/1	+0.000000	Volts	100	
Ch6 Vout	1/1/1	+0.000000	Volts	100	

Record Page



Test Page

```

instruNet HARDWARE SEARCH RESULTS:

Date & Time: 5/13/2003, 15:56:31

-----
Windows XP Version 5.1.2600
instruNet Driver (iNet32.dll 1.40.2.0, iNet32_WinXp.dll 1.4
instruNet World Plus license 03-019226-01818
PCI Controller i200 (slot#9, 4000KBD, 12us, 50%, Sim)
Device i100 (Cal 5/13/2003, Rev 4, 25.00C, Ous, Sim)
    
```

Script Page

```

Alert "Lets begin the experiment."

Ch3_Vout! = Ch1_Vin! + Ch4_Vin!

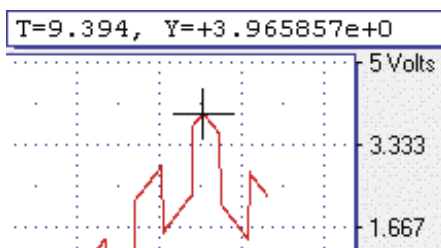
Dout1_Bit! = Din3_Bit!

For V! = 1 to 10
    Print Test Ch1_Vin! ", " Ch2_Vin2 "\r"
Next V!
    
```

Digitize in Background While Working in Other Programs

Digitize and implement feedback/control loops in instruNet World while working in other application programs (requires Windows 2000/XP). For example, one can type in a Microsoft Word window while instruNet World Plus digitizes and controls outputs. Also, one can minimize the instruNet World Plus window (i.e. click on window title bar upper right corner "-" icon to place minimized instruNet World Plus window on desktop application bar) while it operates in the background.

Examine Wave With Cursor - Figure 10



Examine Waveform Values With a Cursor

Use the mouse to move a waveform cursor while numerically viewing the time and waveform value at that cursor position, as illustrated in Figure 10.

Available for Fast Delivery!

To Order (Specify Model Number)		
Model Number	Price	Description
iNET-iWPLUS	\$230	instruNet World Plus software license for one instruNet controller card (includes CD and license certificate)

Ordering Example: iNET-iWPLUS instruNet World plus data acquisition and control software, \$230.



UNITED STATES

www.omega.com
1-800-TC-OMEGA
Stamford, CT.

CANADA

www.omega.ca
Laval(Quebec)
1-800-TC-OMEGA

GERMANY

www.omega.de
Deckenpfronn, Germany
0800-8266342

UNITED KINGDOM

www.omega.co.uk
Manchester, England
0800-488-488

FRANCE

www.omega.fr
Guyancourt, France
088-466-342

CZECH REPUBLIC

www.omegaeng.cz
Karviná, Czech Republic
596-311-899

BENELUX

www.omega.nl
Amstelveen, NL
0800-099-33-44



More than 100,000 Products Available!

• Temperature

Calibrators, Connectors, General Test and Measurement Instruments, Glass Bulb Thermometers, Handheld Instruments for Temperature Measurement, Ice Point References, Indicating Labels, Crayons, Cements and Lacquers, Infrared Temperature Measurement Instruments, Recorders Relative Humidity Measurement Instruments, RTD Probes, Elements and Assemblies, Temperature & Process Meters, Timers and Counters, Temperature and Process Controllers and Power Switching Devices, Thermistor Elements, Probes and Assemblies, Thermocouples Thermowells and Head and Well Assemblies, Transmitters, Wire

• Flow and Level

Air Velocity Indicators, Doppler Flowmeters, Level Measurement, Magnetic Flowmeters, Mass Flowmeters, Pitot Tubes, Pumps, Rotameters, Turbine and Paddle Wheel Flowmeters, Ultrasonic Flowmeters, Valves, Variable Area Flowmeters, Vortex Shedding Flowmeters

• pH and Conductivity

Conductivity Instrumentation, Dissolved Oxygen Instrumentation, Environmental Instrumentation, pH Electrodes and Instruments, Water and Soil Analysis Instrumentation

• Data Acquisition

Auto-Dialers and Alarm Monitoring Systems, Communication Products and Converters, Data Acquisition and Analysis Software, Data Loggers Plug-in Cards, Signal Conditioners, USB, RS232, RS485 and Parallel Port Data Acquisition Systems, Wireless Transmitters and Receivers

• Pressure, Strain and Force

Displacement Transducers, Dynamic Measurement Force Sensors, Instrumentation for Pressure and Strain Measurements, Load Cells, Pressure Gauges, Pressure Reference Section, Pressure Switches, Pressure Transducers, Proximity Transducers, Regulators, Strain Gages, Torque Transducers, Valves

• Heaters

Band Heaters, Cartridge Heaters, Circulation Heaters, Comfort Heaters, Controllers, Meters and Switching Devices, Flexible Heaters, General Test and Measurement Instruments, Heater Hook-up Wire, Heating Cable Systems, Immersion Heaters, Process Air and Duct, Heaters, Radiant Heaters, Strip Heaters, Tubular Heaters