

LDM422 Series

Fully Isolated Limited Distance Modem, RS-232/422 Converter

SERIAL I/O



\$246
Basic Unit

- ✓ Complete Isolation with Optical Couplers and Power DC-to-DC Converter
- ✓ Industrial Surge Protection Devices
- ✓ Six LED Diagnostic Indicators
- ✓ DC to 19,200 Baud at 6000 Feet (1800M), 9600 Baud at 3 Miles (5KM)
- ✓ Request-to-Send, Clear-to-Send Handshake
- ✓ Tri-State Outputs for Multidrop Applications
- ✓ Selection of Connectors
- ✓ Wide Operation Temperature Range
- ✓ Solderless Screw Terminal Field Connections

The LDM422 is a compact RS-232 to RS-422 converter which features a complete electrical isolation barrier and heavy duty electrical surge protectors. These devices feature a rugged aluminum enclosure small enough to mount on the back panel of typical computer equipment, saving valuable desk and floor space.

Isolation is provided by optical couplers and a DC-to-DC converter. The RS-232 connection is through male or female EIA 25-pin connectors. The RS422 connections are made through convenient solderless screw terminals.

The LDM422 series is designed for full duplex operation over two-wire pairs. Outputs are tri-state, allowing multidropping of up to 32 units.

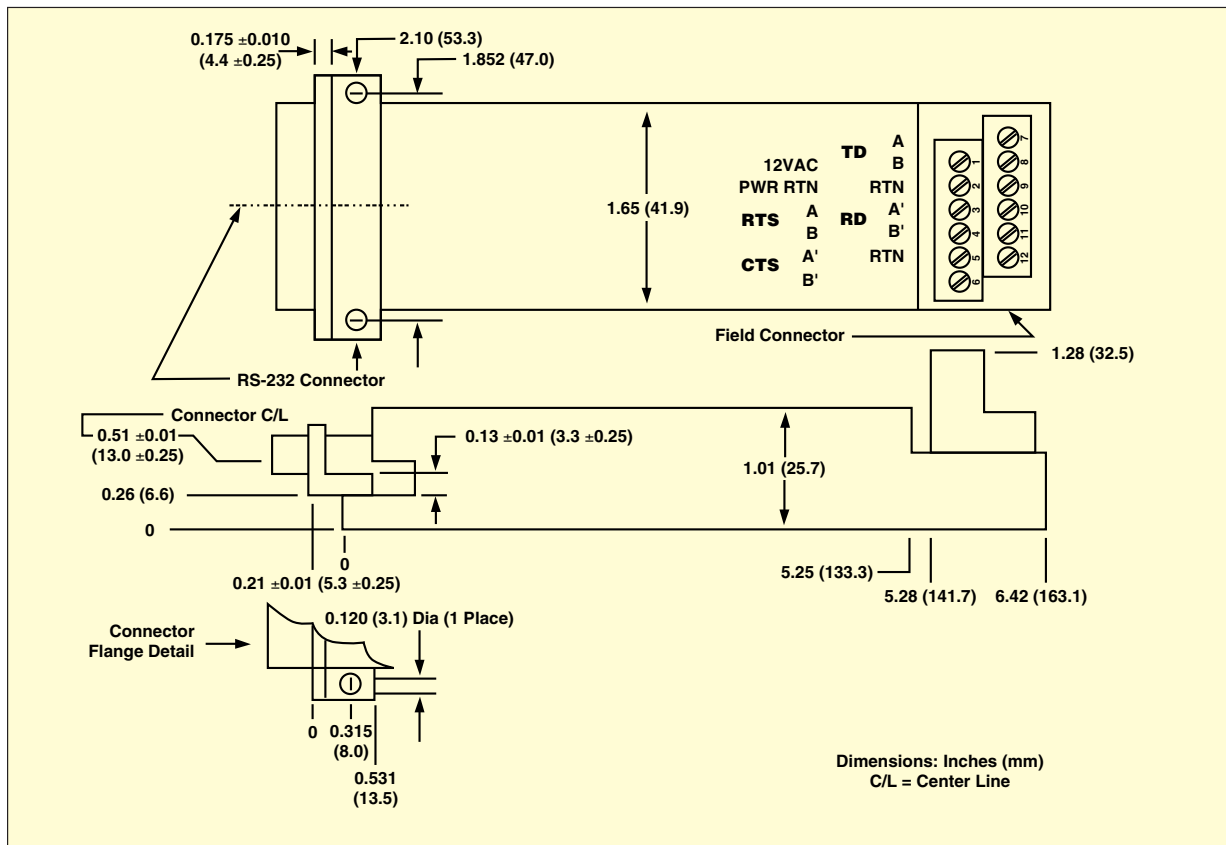
Hardware handshake is available over two separate wire pairs. Data rates are 75 to 19,200 baud. Six diagnostic LED indicators are provided for installation guidance and system troubleshooting. The RS-232 interface supports Request To Send, Clear To Send, Data Set Ready, Received Line Signal

Detect, and Data Terminal Ready. A convenient null modem switch is

Specifications

Model	LDM422				
Baud Rate Range	0 – 19.2K				
Baud Rate	19.2K	9.6K	4.8K	2.4K	1.2K – 0
Distance (miles)	1.14	3	4	5	7
Distance (km)	1.8	5	6.7	8.3	11.7
Maximum Multidrop	32. Reduced distances may be required when as many as 32 units are multidropped. No restrictions apply for distances of 1 mile (1.7 km) or less.				
Common Mode Isolation	Surge: 750V Continuous: 500V				
Differential Mode Surge Protection (9 devices)	(AC input) ANSI/IEEE C37.90.1-1989 (all RS-422 inputs and outputs)				
Channel Lines ⁽¹⁾	TD, RD, RTS, CTS				
Control Lines ⁽¹⁾	RTS, CTS, DTR, DSR, RLSD				
Modes	Asynchronous 4-wire duplex, 2-wire half-duplex, 2-wire simplex				

Notes: (1) TD = Transmit Data, RD = Receive Data, RTS = Request To Send, CTS = Clear To Send, DTR = Data Terminal Ready, DSR = Data Set Ready, RLSD = Received Line Signal Detect.



provided for the data lines. The RS-422 interface supports Request To Send and Clear To Send on separate wire pairs. The LDM422 may be used to convert two sets of send and receive channels by using RTS and CTS circuits as the second data channels.

Data rates are the same. The units use 12VAC from a wall-mounted transformer or ±12VDC to pins 9 (+) and 10 (-) of the RS-232 connector. The LDM422 conforms to EIA RS-232 and RS-422 specifications. Data Terminal Ready must be asserted by the host RS-232 port before the LDM422 can transmit data. When Data Terminal Ready is not asserted all outputs of the LDM422 are high impedance, allowing up to 32 LDM422 units to be multidropped on a common communications cable. See Figure on page 2 for details.

Request To Send and Clear To Send are carried through the RS-422 port as two separate wire pairs. These may be used for full duplex flow control.

Model	LDM422
Null Modem Switch	1 (Reverses RS-232 pins 2 and 3)
RS-422 Output Drive	20mA min/output
RS-422 Input Impedance	6kΩ min/input
Power: AC operation⁽²⁾ DC operation	12VAC, ±10%, 10W screw terms 1 & 2 +11.5VDC to +17.0VDC @ 400mA on pin 9 -11.5VDC to -17.0VDC @ 400mA on pin 10
Operating Environment	0°C to 70°C 0 to 95% relative humidity, noncondensing
Dimensions	6.6" x 2.1" x 1.28" (167.6 x 53.3 x 32.5 mm)
Weight AC Transformer	7 oz (200 g) max 11.0 oz (311.8 g) max
MTBF⁽³⁾	>100,000 hrs

Notes: (2) 120VAC and 220VAC power transformers are available. (3) Ground-benign environmental conditions (no salt atmosphere, <50°C ambient temperature).

MOST POPULAR MODELS HIGHLIGHTED

To Order (Specify Model Number)			
Model No.	Price	RS232 Connector	Power Source
LDM422-P	\$267	25 Pin male	Host-powered
LDM422-S	246	25 Pin female	Host-powered
LDM422-PT	267	25 Pin male	Transformer
LDM422-ST	267	25 Pin female	Transformer

Includes operator's manual. Transformer powered units also include 120 Vac wall mount transformer. OMEGACARESM extended warranty is available for models shown on this page. Ask your sales representative for full details when placing order.

Ordering Example: LDM422-ST converter, OMEGACARESM 1year warranty for LDM422-ST (adds 1 year to standard 1 year warranty), \$267 + 26 = \$293.



UNITED STATES

www.omega.com
1-800-TC-OMEGA
Stamford, CT.

CANADA

www.omega.ca
Laval(Quebec)
1-800-TC-OMEGA

GERMANY

www.omega.de
Deckenpfronn, Germany
0800-8266342

UNITED KINGDOM

www.omega.co.uk
Manchester, England
0800-488-488

FRANCE

www.omega.fr
Guyancourt, France
088-466-342

CZECH REPUBLIC

www.omegaeng.cz
Karviná, Czech Republic
596-311-899

BENELUX

www.omega.nl
Amstelveen, NL
0800-099-33-44



More than 100,000 Products Available!

• Temperature

Calibrators, Connectors, General Test and Measurement Instruments, Glass Bulb Thermometers, Handheld Instruments for Temperature Measurement, Ice Point References, Indicating Labels, Crayons, Cements and Lacquers, Infrared Temperature Measurement Instruments, Recorders Relative Humidity Measurement Instruments, RTD Probes, Elements and Assemblies, Temperature & Process Meters, Timers and Counters, Temperature and Process Controllers and Power Switching Devices, Thermistor Elements, Probes and Assemblies, Thermocouples Thermowells and Head and Well Assemblies, Transmitters, Wire

• Flow and Level

Air Velocity Indicators, Doppler Flowmeters, Level Measurement, Magnetic Flowmeters, Mass Flowmeters, Pitot Tubes, Pumps, Rotameters, Turbine and Paddle Wheel Flowmeters, Ultrasonic Flowmeters, Valves, Variable Area Flowmeters, Vortex Shedding Flowmeters

• pH and Conductivity

Conductivity Instrumentation, Dissolved Oxygen Instrumentation, Environmental Instrumentation, pH Electrodes and Instruments, Water and Soil Analysis Instrumentation

• Data Acquisition

Auto-Dialers and Alarm Monitoring Systems, Communication Products and Converters, Data Acquisition and Analysis Software, Data Loggers Plug-in Cards, Signal Conditioners, USB, RS232, RS485 and Parallel Port Data Acquisition Systems, Wireless Transmitters and Receivers

• Pressure, Strain and Force

Displacement Transducers, Dynamic Measurement Force Sensors, Instrumentation for Pressure and Strain Measurements, Load Cells, Pressure Gauges, Pressure Reference Section, Pressure Switches, Pressure Transducers, Proximity Transducers, Regulators, Strain Gages, Torque Transducers, Valves

• Heaters

Band Heaters, Cartridge Heaters, Circulation Heaters, Comfort Heaters, Controllers, Meters and Switching Devices, Flexible Heaters, General Test and Measurement Instruments, Heater Hook-up Wire, Heating Cable Systems, Immersion Heaters, Process Air and Duct, Heaters, Radiant Heaters, Strip Heaters, Tubular Heaters