



### Infrared Thermocouple Data Logger Part of the NOMAD® Family



OM-CP-IRTC110 data logger with infrared thermocouple, \$299, shown larger than actual size.

OM-CP-IRTC110  
Starts at  
**\$299**



- ✓ 10-Year Battery Life
- ✓ Wide Temperature Range
- ✓ Uses Type K Infrared Thermocouple
- ✓ NIST Traceable Calibration
- ✓ Real-Time Operation
- ✓ Programmable Start/Stop Time
- ✓ Miniature Size

The OM-CP-IRTC110 is a miniature, battery powered, stand alone, infrared thermocouple based temperature recorder, for nearly instantaneous, non-contact, temperature measurements.

The OM-CP-IRTC110 features a real-time clock module that extends the battery life to >10 years and allows for high speed downloads.

This is an all-in-one compact, portable, easy to use device that will measure and record up to 16,383 measurements per channel. The storage medium is non-volatile solid state memory, providing maximum data security even if the battery becomes discharged. The device can be started and stopped directly from your computer and its small size allows it to fit almost anywhere.

The OM-CP-IRTC110 makes data retrieval quick and easy. Simply plug it into an empty COM or USB port and our user-friendly software does the rest.

#### Specifications

**Internal Channel Temperature Range:** -40 to 80°C (-40 to 176°F)  
**Temperature Resolution:** 0.1°C  
**Logger Calibrated Accuracy:** ±0.5°C (0 to 50°C)

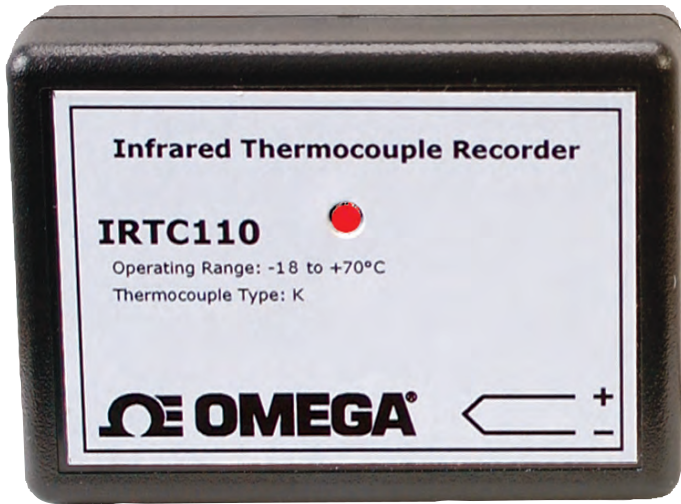
#### REMOTE CHANNEL

**Thermocouple Type:** K (Infrared, contact sales for other types)  
**Thermocouple Connection:** Female subminiature (SMP)  
**Cold Junction Compensation:** Automatic, based on internal channel  
**Maximum Thermocouple Resistance:** 3000Ω  
**Thermocouple Type:** K  
**Range (°C):** See range chart  
**Sensor:** ±2.0°C  
**Field of View:** 60° (1:1)  
**Minimum Spot Size:** 8 mm (0.3")  
**Spectral Response:** 6.5 to 14 microns  
**Start Modes:** Software programmable immediate start or delay start up to six months in advance  
**Real Time Recording:** May be used with PC to monitor and record data in real time

OS36-01 infrared thermocouple, \$171, sold separately.



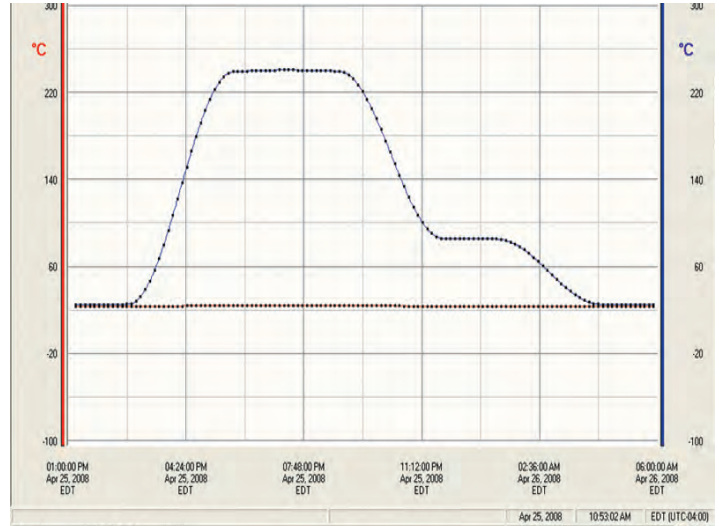
**Memory:** 16,383 readings per channel for a total of 32,766 readings; software configurable memory wrap  
**Reading Rate:** 1 reading every 2 seconds to 1 every 12 hours  
**Calibration:** Digital calibration through software  
**Calibration Date:** Automatically recorded within device  
**Battery Type:** 3.6 V lithium battery (included), user replaceable  
**Battery Life:** 10 years (15 minute reading rate at 25°C)  
**Data Format:** Date and time stamped °C, °F, K, °R  
**Time Accuracy:** ±1 minute/month (at 20 to 30°C)  
**Computer Interface:** PC serial or USB (interface cable required); 57,600 baud  
**Software:** WIN98/NT/2000/XP/VISTA 32-bit/7(32-bit); (VISTA/7 32-bit version only; VISTA/7 64-bit are not supported)  
**Operating Environment:** -40 to 80°C (-40 to 176°F)  
**Dimensions:** 44 x 59 x 21 mm (1.7 x 2.3 x 0.8")  
**Infrared Thermocouple Dimensions:** 3.25 L x 1.80 cm Dia. (1.28 x 0.71"); 0.9 m (36") PFA coated unshielded stranded wire  
**Weight:** 60 g (2.1 oz)



OM-CP-IRTC110 data logger, \$299, shown actual size.

### Infrared Thermocouple Range Chart

Range Code	Temperature Range (2% Accuracy)
50F	-18 to 27°C (0 to 80°F)
80F	10 to 49°C (50 to 120°F)
98.6F	16 to 39°C (60 to 102°F)
140F	25 to 80°C (80 to 180°F)
180F	70 to 104°C (160 to 220°F)
240F	95 to 130°C (220 to 270°F)
280F	125 to 155°C (260 to 310°F)
340F	145 to 175°C (290 to 350°F)
440F	170 to 250°C (340 to 480°F)



OM-CP-IFC200, \$129, Windows software displays data in graphical or tabular format

**MOST POPULAR MODELS HIGHLIGHTED!**

### To Order (Specify Model Number)

Model No.	Price	Description
OM-CP-IRTC110	\$299	Infrared thermocouple data logger
OM-CP-IRTC110-CERT	359	Infrared thermocouple data logger with NIST calibration certificate
OM-CP-IFC110	99	Windows software and 1.2 m (4') RS-232 cable with DB9F termination
OM-CP-IFC200	129	Windows software and 3.7 m (12') USB interface cable
OM-CP-BAT105	12	Replacement 3.6 V lithium battery

Comes complete with 3.6V lithium battery. Operator's manual and interface cable are included with the **OM-CP-IFC200** software/cable package (required for data logger operation, sold separately).

**Ordering Example:** **OM-CP-IRTC110-CERT**, infrared thermocouple data logger with NIST calibration certificate, **OS36-01-K-440F-SMPW**, infrared thermocouple with 170 to 250°C (340 to 480°F) temperature range, and **OM-CP-IFC200** Windows software and RS-232 cable with DB9F termination, \$359 + 171 + 99 = **\$629**.

### Infrared Thermocouples

Model No.	Price	Description
OS36-01-K-50F-SMPW	\$171	Type K infrared thermocouple, -18 to 27°C (0 to 80°F)
OS36-01-K-80F-SMPW	171	Type K infrared thermocouple, 10 to 49°C (50 to 120°F)
OS36-01-K-98.6F-SMPW	171	Type K infrared thermocouple, 16 to 39°C (60 to 102°F)
OS36-01-K-140F-SMPW	171	Type K infrared thermocouple, 25 to 80°C (80 to 180°F)
OS36-01-K-180F-SMPW	171	Type K infrared thermocouple, 70 to 104°C (160 to 220°F)
OS36-01-K-240F-SMPW	171	Type K infrared thermocouple, 95 to 130°C (200 to 270°F)
OS36-01-K-280F-SMPW	171	Type K infrared thermocouple, 125 to 155°C (260 to 310°F)
OS36-01-K-340F-SMPW	171	Type K infrared thermocouple, 145 to 175°C (290 to 350°F)
OS36-01-K-440F-SMPW	171	Type K infrared thermocouple, 170 to 250°C (340 to 480°F)