

# OM-EL Series Portable Data Loggers

**\$239**  
Basic Unit



- ✓ 8-Bit and 12-Bit Models
- ✓ Thermocouple, 100 Ω Pt RTD, pH, dc Voltage, dc Current, Pulse Inputs
- ✓ Up to 3 Year Battery Life
- ✓ Record up to 8000 Readings

OMEGA's OM-EL Series is a family of portable data loggers with up to 12 bit accuracy and resolution.

OM-EL Series data loggers feature a high contrast LCD display, up to 3 years battery life, adjustable sampling rate (variable between 5 seconds and 12 hours), data storage up to 8000 readings, alarm modes, delayed, automatic or push to start. The 8 bit (256 steps) model has an integral sensor, making temperature measurements particularly easy.

Ideally suited for incorporation into new and existing measurement systems, readings can be stored and processed in the panel meter, allowing full control of the monitored process.

The OM-EL-WIN Windows compatible software (Windows 98/NT/2000/XP) ensures an effortless set-up of one or more of the OM-EL Series data loggers modules and controls the transfer of logged data to the PC for further analysis.

Although perfectly suited to self powered applications, up to eight OM-EL Series data loggers modules can be linked together in a network to form a complete control and measurement system.



**Model OM-EL-2, enclosed portable data logger, \$239, shown smaller than actual size**

*OMEGACARE<sup>SM</sup> extended warranty program is available for models shown on this page. Ask your sales representative for full details when placing an order. OMEGACARE<sup>SM</sup> covers parts, labor and equivalent loaners.*

## Physical Specifications

Model Number	OM-EL-2 OM-EL-2-12BIT
Dimensions	2.12 H x 2.75 W x 1.02" D (54 x 70 x 26 mm)

Designed to perform simple or sophisticated data logging with the minimum of cost and complexity, the logger has a built-in LCD display and an internal battery which can last up to 3 years, depending on sample rate and parameters being measured. Sample intervals are user-variable between 5 seconds and 12 hours with a maximum capacity of over 8000 readings.

Easy to install on a Windows 98/NT/2000 or XP platform, the OM-EL-WIN Easy Log control software is needed to enable the user to configure and operate any OM-EL data logger and is supplied on a 3½ disk with a manual and serial link cable. Allowing up to eight loggers to be operated as a network, the OM-EL-WIN software includes

automatic prompting for ease of use, a mimic mode which allows remote indication on the PC, extensive graphing facilities and the facility to export data directly into popular spreadsheets such as Excel.

## Specifications

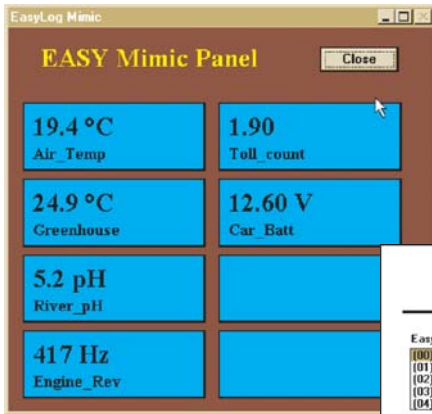
**Number of Readings:** 8000

**Logging Interval:**  
Selectable 5 sec to 12 hrs

**Serial Link:** 8 pin mini-DIN connection

**Sensor Connection:**  
OM-EL-2-phone jack,  
OM-EL-2-12 BIT- 4-pin connector (mating connector supplied)

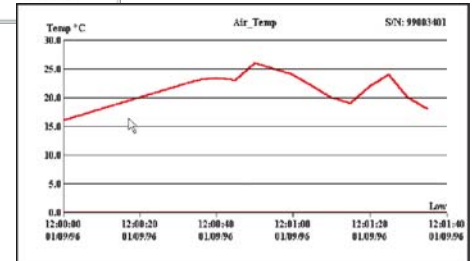
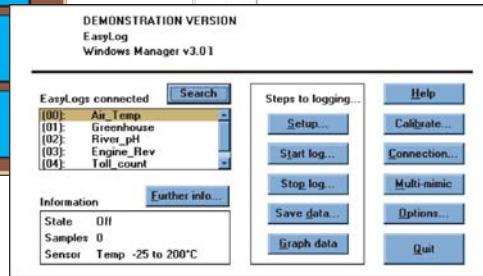
**Range selection:**  
8 bit model; software selectable;  
12 bit model; selected by internal jumper



Configure and operate any OM-EL Series data logger.



## EasyLog for Windows Control Software



## Input Types and Ranges

Model Number		OM-EL-2	OM-EL-2-12BIT
Input Type	Range	Resolution/Accuracy	Resolution/Accuracy
Temperature (internal sensor)	14 to 122°F (-10 to 50°C)	1°F/±2°F (1°C/±1°C)	-
Temperature (Type K t/c)	-13 to 392°F (-25 to 200°C)	1°F/±2°F (1°C/±1°C)	-
Temperature (Pt100 RTD)	-200 to 200°F (-200 to 200°C)	-	0.1°F/±1°F (0.1°C/±0.5°C)
Temperature (Pt100 RTD)	-328 to 1562°F (-200 to 850°C)	-	1°F/±2°F (1°C/±1°C)
pH	0 to 14 pH	0.1 pH/*	-
dc Voltage	±200 mV	-	100 uV/0.05%
dc Voltage	±2 V	0.01 V/±1%	1 mV/0.05%
dc Voltage	±20 V	-0.1 V/±1%	10 mV/0.05%
dc Current	4 to 20 mA	-	16 uA/±0.1%
Frequency**	40 to 400 Hz	NA/±2 Hz	-
Rate Count†	0 to 255	1 unit/NA	-

\*Sensor Dependent \*\*Pulse input,  $V_{IH} > 2.0 V$ ,  $V_{IL} < 1.0 V$ . Max input  $\pm 20 V$ .

†Counts no. of pulses over a given period. Max no. of counts per period is 255. Voltage levels are the same as for frequency measurement.

**ALL MODELS AVAILABLE FOR FAST DELIVERY!**

### To Order (Specify Model Number)

Model Number	Price	Description
OM-EL-2	239	8-bit portable data logger
OM-EL-2-12BIT	365	12-bit portable data logger
OM-EL-WIN	76	EasyLog for Windows software for OM-EL Series data loggers
OM-EL-BATT	4	Replacement 3.6 lithium battery
OM-EL-EASYLINK-STD-D	57	Spare RS-232 cable (DB9F termination) for OM-EL series data loggers

All data loggers come with complete operator's manual and sensor mating connector. RS-232 cable is supplied with Easylog Software.

Ordering Example: OM-EL-2 8 bit portable data logger, OM-EL-WIN EasyLog for Windows software and OMEGACARE<sup>SM</sup> 1 year extended warranty for OM-EL-2 (adds 1 year to standard 1 year warranty), \$239 + 76 + 25 = \$340.



#### UNITED STATES

[www.omega.com](http://www.omega.com)  
1-800-TC-OMEGA  
Stamford, CT.

#### CANADA

[www.omega.ca](http://www.omega.ca)  
Laval(Quebec)  
1-800-TC-OMEGA

#### GERMANY

[www.omega.de](http://www.omega.de)  
Deckenpfronn, Germany  
0800-8266342

#### UNITED KINGDOM

[www.omega.co.uk](http://www.omega.co.uk)  
Manchester, England  
0800-488-488

#### FRANCE

[www.omega.fr](http://www.omega.fr)  
Guyancourt, France  
088-466-342

#### CZECH REPUBLIC

[www.omegaeng.cz](http://www.omegaeng.cz)  
Karviná, Czech Republic  
596-311-899

#### BENELUX

[www.omega.nl](http://www.omega.nl)  
Amstelveen, NL  
0800-099-33-44



## More than 100,000 Products Available!

### • Temperature

Calibrators, Connectors, General Test and Measurement Instruments, Glass Bulb Thermometers, Handheld Instruments for Temperature Measurement, Ice Point References, Indicating Labels, Crayons, Cements and Lacquers, Infrared Temperature Measurement Instruments, Recorders Relative Humidity Measurement Instruments, RTD Probes, Elements and Assemblies, Temperature & Process Meters, Timers and Counters, Temperature and Process Controllers and Power Switching Devices, Thermistor Elements, Probes and Assemblies, Thermocouples Thermowells and Head and Well Assemblies, Transmitters, Wire

### • Flow and Level

Air Velocity Indicators, Doppler Flowmeters, Level Measurement, Magnetic Flowmeters, Mass Flowmeters, Pitot Tubes, Pumps, Rotameters, Turbine and Paddle Wheel Flowmeters, Ultrasonic Flowmeters, Valves, Variable Area Flowmeters, Vortex Shedding Flowmeters

### • pH and Conductivity

Conductivity Instrumentation, Dissolved Oxygen Instrumentation, Environmental Instrumentation, pH Electrodes and Instruments, Water and Soil Analysis Instrumentation

### • Data Acquisition

Auto-Dialers and Alarm Monitoring Systems, Communication Products and Converters, Data Acquisition and Analysis Software, Data Loggers Plug-in Cards, Signal Conditioners, USB, RS232, RS485 and Parallel Port Data Acquisition Systems, Wireless Transmitters and Receivers

### • Pressure, Strain and Force

Displacement Transducers, Dynamic Measurement Force Sensors, Instrumentation for Pressure and Strain Measurements, Load Cells, Pressure Gauges, Pressure Reference Section, Pressure Switches, Pressure Transducers, Proximity Transducers, Regulators, Strain Gages, Torque Transducers, Valves

### • Heaters

Band Heaters, Cartridge Heaters, Circulation Heaters, Comfort Heaters, Controllers, Meters and Switching Devices, Flexible Heaters, General Test and Measurement Instruments, Heater Hook-up Wire, Heating Cable Systems, Immersion Heaters, Process Air and Duct, Heaters, Radiant Heaters, Strip Heaters, Tubular Heaters