

# DATA LOGGERS

## Portable Data Logger

OM-SQ2010  
Starts at

**\$1540**



Optional†

- ✓ 4 to 8 Universal Analog Inputs (Current, Voltage, Resistance, Temperature) Plus 8 Digital Inputs
- ✓ 16 Derived/Calculated Channels
- ✓ 2 Alarm Outputs and 2 Pulse Counter Inputs (1 at 64 KHz, 1 at 100 Hz)
- ✓ 0.1% Accuracy
- ✓ Up to 1.8 Million Readings
- ✓ Large Easy-to-Read Graphical Display
- ✓ Includes Windows® Software for Data Logger Setup and Data Transfer to PC
- ✓ USB Connectivity
- ✓ RS-232 Output For Modem and Wireless Connection (Via Interface Modules)

The OM-SQ2010 is a versatile general purpose data logger with 4 to 8 analog input channels to measure current, voltage, resistance and temperature, plus 8 digital channels to automatically trigger or stop logging. An RS-232 port is included, allowing connection to modems and other networking devices.

This is a portable data logger which is also suitable for benchtop and fixed installations. The unit is easily programmed via the four integral push buttons and large graphical display or via the included Windows® software. The OM-SQ2010 is able to fulfill many routine data logging needs, including more demanding applications requiring up to ten readings per second on one channel.

### Comprehensive Software Configuration:

The OM-SQ-SOFT software (supplied with the OM-SQ2010 series data loggers) allows logger configuration, data download and data export while giving the user full control over the OM-SQ2010. The optional OM-SQ-SOFT-PLUS software gives the user access to many advanced data analysis and data archiving/transfer features.



OM-SQ2010 data logger, \$1540, shown smaller than actual size

The optional OM-SQ-SOFT-PLUS software lets you quickly and easily analyze the data from your OM-SQ2010 data logger in a familiar windows explorer style interface. Data can be displayed with 2 different auto scaling Y-axis. This is particularly useful when displaying widely varying data from different sensors on one graph.

You can also zoom in on areas of interest, use a cursor to pick out exact values, times and dates, get a statistical summary of your data, set high and low alarm thresholds and, using the calculation function, you can create new virtual channels from existing channels.

The OM-SQ-SOFT-PLUS software also incorporates a report generation facility, which allows you to create custom report templates consisting of a title page with descriptive text, headers and footers, graphs, tabular list of data, statistics and data logger setup information.



OMEGACARE™ extended warranty program is available for models shown on this page. Ask your sales representative for full details when placing an order. OMEGACARE™ covers parts, labor and equivalent loaners.

Templates can be setup with any of these combinations and saves time when preparing similar presentations of data

### Specifications

#### No. of Analog Channels:

8 single ended or 4 differential inputs. The OM-SQ2010 data logger has a single analog to digital converter (A/D) which corresponds to inputs on blocks A and B. Each connection block will accept up to 2 differential inputs or up to 4 single ended inputs (it is not possible to mix single ended and differential inputs on a block).

#### Analog Input Connections:

Detachable screw terminal blocks

#### Channel Expansion:

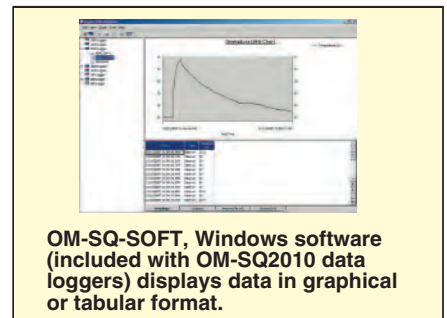
No

#### Universal Input:

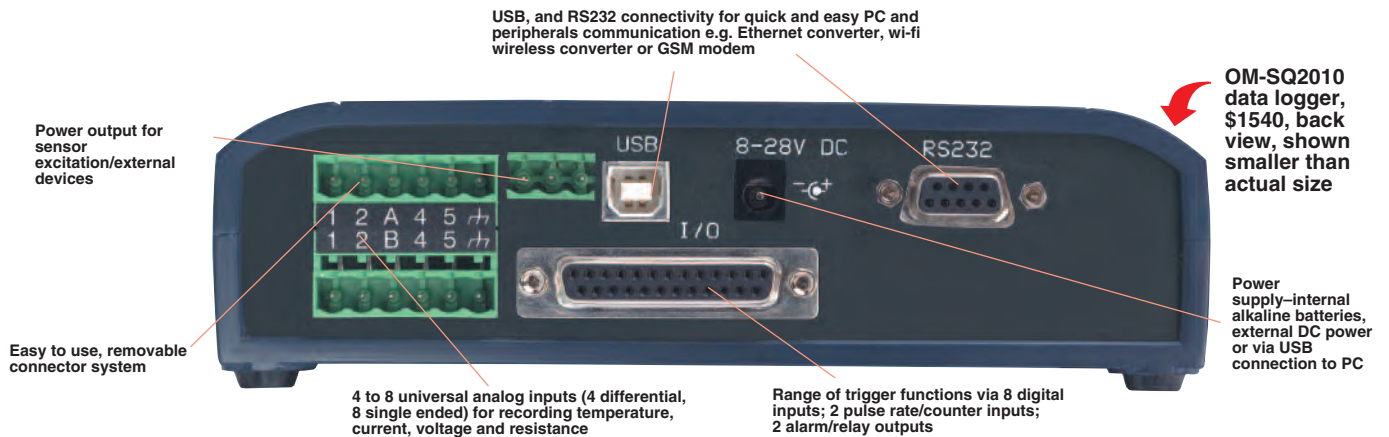
Yes

#### Voltage Ranges

(Differential and Single Ended):  
-6 to 25, -0.6 to 2.4, ±0.3V,  
-0.15 to 0.15, -0.075 to 0.075,  
-6 to 12, -6 to 6, -3 to 3, -0.6 to 1.2,  
-0.6 to 0.6



To Order, Call **1-800-327-4333<sup>SM</sup>** or Shop Online at **omega.com<sup>SM</sup>**



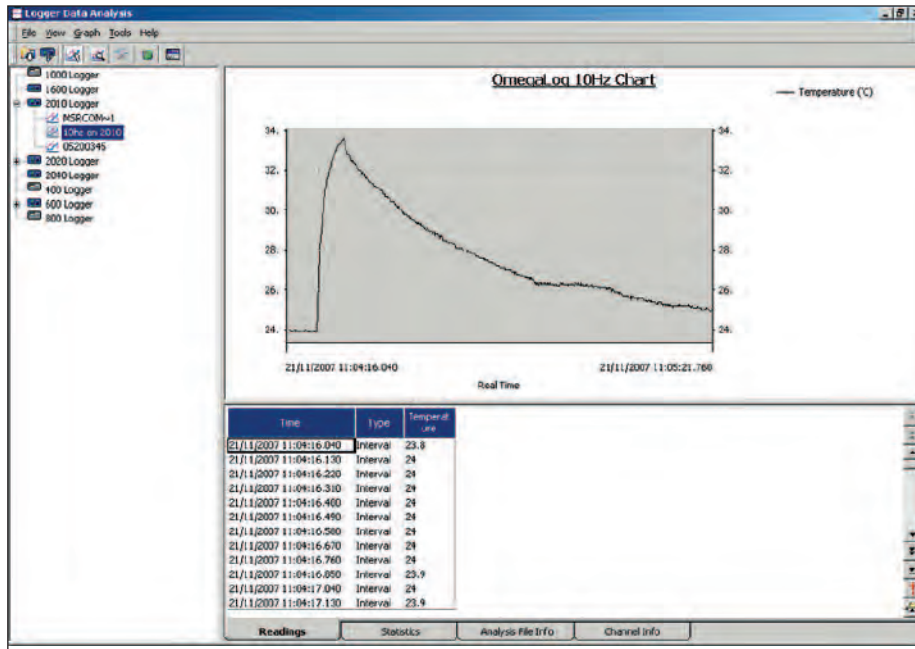
**Common Mode:** 25V  
**Current Ranges, Differential (Requires External 10 Ω Shunt):**  
 4 to 20 mA, ±30 mA  
**Thermocouple Ranges (Differential and Single Ended):**  
**Type J:** -200 to 1200°C (-328 to 2192°F)  
**Type K:** -200 to 1372°C (-328 to 2502°F)  
**Type T:** -200 to 400°C (-328 to 752°F)  
**Type N:** -200 to 1300°C (-328 to 2372°F)  
**Type R:** -50 to 1768°C (-58 to 3214°F)  
**Type S:** -50 to 1768°C (-58 to 3214°F)  
**Resistance Ranges (All 2 Wire):**  
 0 to 1250 Ω, 0 to 5000 Ω  
 0 to 20,000 Ω, 0 to 300,000 Ω  
**Thermistor Ranges:**  
**U & UU-Type:** -50 to 150°C (-58 to 302°F)  
**Y-Type:** -50 to 150°C (-58 to 302°F)  
**S-Type:** -30 to 150°C (-22 to 302°F)

**User-Defined Thermistor:** Enter Steinhart-Hart coefficients or RT pairs  
**Pt100/1000 (2-wire):** -200 to 850°C (-328 to 1562°F)  
**A/D Resolution:** 24-bit  
**Accuracy:** See table  
**Internal Reference Temperature:** -50 to 150°C (-58 to 302°F)  
**Pulse Count Ranges:** 0 to 100 Hz (1 input); 0 to 64 kHz (1 input); 0 to 16,000,000 count  
**Digital State/Event Ranges:** 8 state inputs or 1 x 8 bit binary  
**Digital/Alarm Outputs:** 2 open drain FETs, 18V, 0.1A  
**Digital I/O Connections:** DB25F connector  
**Clock Resolution/Accuracy:**  
**1s/10 ppm Normal Mode:** Each input sampled at a max rate of 1 rdg per second  
**Double-Speed (Mains Reject Off):** One input can be sampled at 10 rdgs per second and all others are sampled at a max rate of 1 rdg per second

**No of Intervals:** 4  
**Data Scaling:** Included in standard OM-SQ software  
**Data Statistics:** Calculated within OM-SQ-SOFT-PLUS software  
**Calculated Channels:** Up to 16  
**Memory Internal:** 16 M (1 to 1.8 million readings)  
**Display/Keypad:** 128 x 64 dot graphical display, 4 button keypad  
**Power:** 2 C cells internal (included), or external 8 to 28 Vdc via AC adaptor and USB when plugged in  
**Battery Life:** Up to 5 days with continuous usage while sampling all channels once per second  
**Sensor Power Output:** 5 V at 50 mA, external 8 to 28V at 100 mA (when connected)  
**Networking:** Via RS-232 to Ethernet adaptor (Model No. OM-SQ-NET-ADAP)  
**Modem Support :** Via RS-232 modem (GSM modem kit Model No. OM-SQ-GSM-KIT)

Input Channels	Accuracy @ 23°C
Differential voltage	±(0.1% of reading + 0.05% of full scale)
Single-ended voltage	±(0.1% of reading + 0.1% of full scale)
Differential current	±(0.1% of reading + 0.1% of full scale)
Resistance (up to 200 Ω)	±(0.1% of reading + 0.1% of full scale)
Thermistors (up to 130°C)	±(0.15% of reading + 0.1% of full scale)
Pt100/1000 RTD	±(0.15% of reading + 0.1% of full scale)
Differential J, K and N thermocouples (above -50°C) *	±0.1% of full scale
Differential R, S and T thermocouples (above -50°C) *	±0.2% of full scale
Single-ended J, K and N thermocouples (above -50°C) *	±0.15% of full scale
Single-ended R, S and T thermocouples (above -50°C) *	±0.25% of full scale
Pulse count and rate	±(0.0011% of reading + 1)

\* Includes cold junction compensation (CJC) error. Data logger held at constant temperature



OM-SQ-SOFT, Windows software (included with OM-SQ2010 data loggers) displays data in graphical or tabular format.

**AVAILABLE FOR FAST DELIVERY!**



OM-SQ2010 data logger, \$1540, shown smaller than actual size

### To Order (Specify Model Number)

Model No.	Price	Description
OM-SQ2010	\$1540	Portable handheld data logger including carrying case, 2 C cell batteries, input terminal blocks, 4 current shunts, screw driver, USB cable and OM-SQ-SOFT software
OM-SQ2010-KIT	1740	Same as OM-SQ2010 plus OM-SQ-SOFT-PLUS software and 120 Vac adaptor
OM-SQ-SOFT-PLUS	293	OM-SQ2010 plus software

To order data logger with calibration certificate, add suffix "-CAL" to model number and add \$258 to the price.

**Ordering Example:** OM-SQ2010-KIT portable data logger kit includes data logger, carrying case, 2 C cell batteries, 3 input terminal blocks, 4 current shunts, screw driver, USB cable, 120 Vac adaptor and OM-SQ-SOFT-PLUS software and OMEGACARE<sup>SM</sup> 1-year extended warranty for OM-SQ2010-KIT (adds 1 year to standard 1 year warranty), \$1740 + 150 = \$1890.

**PC Setup:** Complete data logger set up possible via OM-SQ software; software compatible with WIN 98/2000/XP/VISTA (32-bit & 64-bit)/7 (32-bit & 64-bit)

**Front Panel Setup:** Via 4 integral 4 keys. All essential functionality available via key pad e.g. channel configuration, start/stop logging etc. Other advanced functions e.g. calculated channels and channel descriptions are available via connection to a PC running OM-SQ data logger software

**Stored Setups:** 6

**Operating Temperature:** -20 to 65°C (-4 to 149°F)

**Dimensions:**

135 H x 175 W x 55 mm D (5.3 x 6.9 x 2.2")

**Weight:** 0.7 kg (1.5 lb)

**Enclosure:** ABS plastic

### Accessories

Model No.	Price	Description
OM-SQ2010-CASE	\$50	Carrying case for OM-SQ2010
OM-SQ-NET-ADAP	300	Serial/ethernet converter kit
OM-SQ-GSM-KIT	515	GSM modem kit
OM-SQ-RF-ADAP	490	Wireless network adaptor
OM-SQ-UNIV-ADAP	58	Universal power pack
OM-SQ-UNIV-ADAP-1	72	Universal power pack with 1 m (3.2') flying lead
OM-SQ-CS	50	Spare current shunts (package of 4)
OM-SQ-SER-CABLE	18	OM-SQ data logger to PC serial port cable
OM-SQ-USB-CABLE	9	Spare OM-SQ data logger to PC USB port cable
OM-SQ-TB3	5	Spare 3-way terminal block with cable restraint
OM-SQ-TB4	6	Spare 4-way terminal block with cable restraint
OM-SQ-TB6	10	Spare 6-way terminal block with cable restraint
OM-SQ-SOFT-PLUS	293	OM-SQ2010 PLUS software
OM-SQ-SOFT-PLUS-LIC	565	OM-SQ2010 PLUS software multi-user license



#### UNITED STATES

[www.omega.com](http://www.omega.com)  
1-800-TC-OMEGA  
Stamford, CT.

#### CANADA

[www.omega.ca](http://www.omega.ca)  
Laval(Quebec)  
1-800-TC-OMEGA

#### GERMANY

[www.omega.de](http://www.omega.de)  
Deckenpfronn, Germany  
0800-8266342

#### UNITED KINGDOM

[www.omega.co.uk](http://www.omega.co.uk)  
Manchester, England  
0800-488-488

#### FRANCE

[www.omega.fr](http://www.omega.fr)  
Guyancourt, France  
088-466-342

#### CZECH REPUBLIC

[www.omegaeng.cz](http://www.omegaeng.cz)  
Karviná, Czech Republic  
596-311-899

#### BENELUX

[www.omega.nl](http://www.omega.nl)  
Amstelveen, NL  
0800-099-33-44



## More than 100,000 Products Available!

### • Temperature

Calibrators, Connectors, General Test and Measurement Instruments, Glass Bulb Thermometers, Handheld Instruments for Temperature Measurement, Ice Point References, Indicating Labels, Crayons, Cements and Lacquers, Infrared Temperature Measurement Instruments, Recorders Relative Humidity Measurement Instruments, RTD Probes, Elements and Assemblies, Temperature & Process Meters, Timers and Counters, Temperature and Process Controllers and Power Switching Devices, Thermistor Elements, Probes and Assemblies, Thermocouples Thermowells and Head and Well Assemblies, Transmitters, Wire

### • Flow and Level

Air Velocity Indicators, Doppler Flowmeters, Level Measurement, Magnetic Flowmeters, Mass Flowmeters, Pitot Tubes, Pumps, Rotameters, Turbine and Paddle Wheel Flowmeters, Ultrasonic Flowmeters, Valves, Variable Area Flowmeters, Vortex Shedding Flowmeters

### • pH and Conductivity

Conductivity Instrumentation, Dissolved Oxygen Instrumentation, Environmental Instrumentation, pH Electrodes and Instruments, Water and Soil Analysis Instrumentation

### • Data Acquisition

Auto-Dialers and Alarm Monitoring Systems, Communication Products and Converters, Data Acquisition and Analysis Software, Data Loggers Plug-in Cards, Signal Conditioners, USB, RS232, RS485 and Parallel Port Data Acquisition Systems, Wireless Transmitters and Receivers

### • Pressure, Strain and Force

Displacement Transducers, Dynamic Measurement Force Sensors, Instrumentation for Pressure and Strain Measurements, Load Cells, Pressure Gauges, Pressure Reference Section, Pressure Switches, Pressure Transducers, Proximity Transducers, Regulators, Strain Gages, Torque Transducers, Valves

### • Heaters

Band Heaters, Cartridge Heaters, Circulation Heaters, Comfort Heaters, Controllers, Meters and Switching Devices, Flexible Heaters, General Test and Measurement Instruments, Heater Hook-up Wire, Heating Cable Systems, Immersion Heaters, Process Air and Duct, Heaters, Radiant Heaters, Strip Heaters, Tubular Heaters