

# VELOCITY AND TEMPERATURE MEASUREMENT SYSTEM

TVS-1000 Series  
Starts at  
**\$3630**

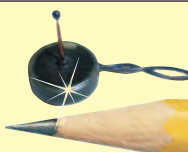


- ✓ Flexible Sensors
- ✓ Thin Low Profile for Minimal Flow Disturbance
- ✓ High Accuracy
- ✓ Air Velocity and Temperature Measurements in One Sensor
- ✓ Research Quality Results

The TVS-1004 and TVS-1008 automatic temperature and velocity scanners are portable, 4- and 8-channel hot wire anemometer systems. The TVS-1100 series are factory expandable for up to 32 total sensors. Fully automated, these research-quality instruments take accurate single- or multi-point measurements of air temperature, velocity and surface temperature in complex environments, such as PCBs and electronics enclosures. When used as temperature loggers, they can measure both fluid and solid temperatures.

The TVS-1000 series employ patented, fast response, omnidirectional sensors, which measure both temperature and velocity. This patented single-sensor technology eliminates errors introduced as a result of air flow being non-isothermal. Each precisely calibrated sensor is flexible and robust with a low-profile configuration that allows minimally intrusive mounting throughout the peaks and valleys created by the PCB components. These systems require a PC to operate and utilize the provided software for data acquisition and reporting.

TVS-1000-RP sensor, \$285, shown actual size.



TVS-1004, \$3630, shown smaller than actual size.



*The TVS-1004 series is supplied with one miniature candlestick sensor for each channel. Shown slightly larger than actual size.*



TVS-1004 Kit, \$3630, includes 4 calibrated sensors, scanner, analysis software, power cord and complete operator's manual.

The candlestick style sensor, is a flexible, robust, base-and-stem design sensor that measures both temperature and air velocity for characterizing thermal conditions in electronic systems. The candlestick sensor is narrow and low profile to minimize the disturbance of the heat flow in the test domain. It features a flexible, plastic-sleeved stem, which facilitates installation and repositioning during the testing process. Sensors are calibrated for low (natural convection) and high velocity flows. They are capable of temperature measurements ranging from -30 to 150°C ±1°C. Velocity measurements range from 0 to 20 m/s (4000 ft/min). Other ranges available contact OMEGA



TVS-1132, \$21,005, shown smaller than actual size.

for details. The use of a single sensor to measure both temperature and velocity eliminates errors that can occur when airflow is non-isothermal. Multiple candlestick sensors can be easily installed to thoroughly map a system's thermal and airflow conditions. Their robust nature allows for continuous repositioning and reading.

# SPECIFICATIONS

## Scanners

**Power:** 115 Vac, 60 to 50 Hz

**Max No of Channels:** 4 for TVS-1004; 8 for TVS-1008

**Temperature Range:** -30 to 150°C ±1°C (-22 to 302°F) ±1.8°F

**Velocity Range:** 0 to 20 m/s (4000 ft/min) ±2% at velocity, other ranges available contact OMEGA for details.

**Sensors:** Up to 8 with the TVS-1008; Up to 4 with the TVS-1004; TVS-1100 series are factory expandable for up to 32 channels

**Measurement Duration:** Depends upon the PC storage limitation in the save file mode, unlimited without saving data  
PC Software with thermal analysis module

**Computer Interface:** RS232 Port w/USB adaptor

## Sensor

**Cable:** 2 m (6')

**Height:** 12 mm (0.5")

**Base Diameter:** 9.5 mm (0.4")

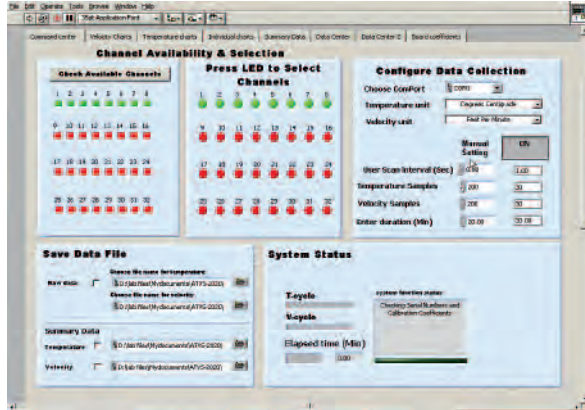
**Sensor Stem Diameter:** 0.5 mm (0.02")

**Sensor Bead Diameter:** 1.1 mm (0.04")

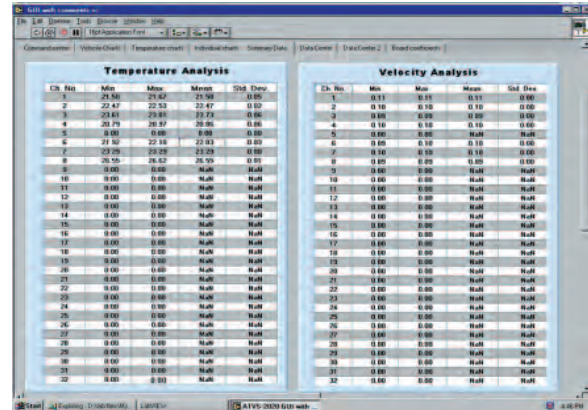
**Velocity Measurements:** 0 to 20 m/s or custom

**Temperature Measurements:** -30 to 150°C ±1°C

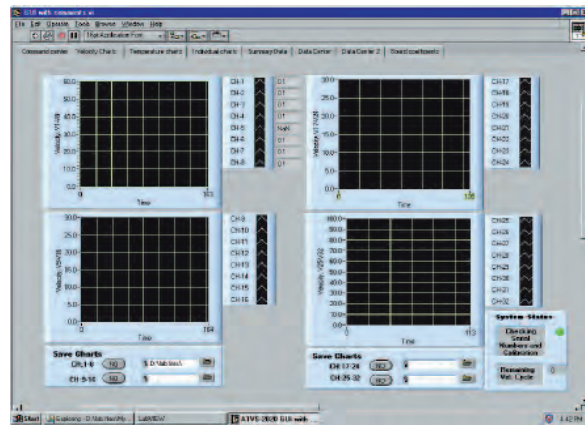
Series	TVS-1000	TVS-1100
Depth	23.5 cm (9¼")	27.9 cm (11")
Width	13.4 cm (5¼")	34.3 cm (13.5")
Height	6.4 cm (2.5")	3.5 cm (5.3")
Weight	2 kg (4 lbs)	5 kg (10 lbs)



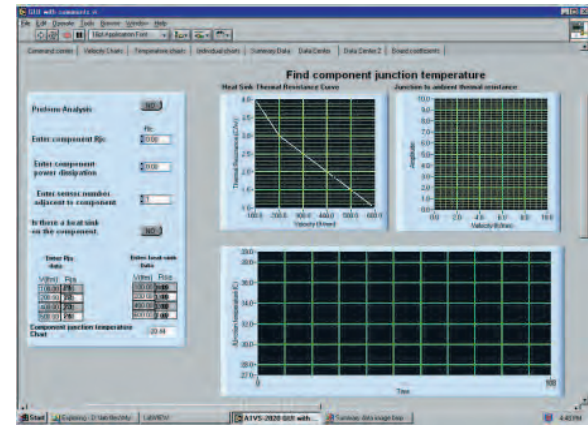
TVS-1000 Series PC software with thermal analysis module.



TVS-1000 Series PC software with thermal analysis module.



TVS-1000 Series PC software with thermal analysis module.



TVS-1000 Series PC software with thermal analysis module.

**MOST POPULAR MODELS HIGHLIGHTED!**

To Order (Specify Model Number)		
Model No.	Price	Description
TVS-1004	\$3630	Scanner, 4 velocity/temperature sensors and software
TVS-1008	5300	Scanner, 8 velocity/temperature sensors and software
TVS-1108	8150	Scanner, 8 velocity/temperature sensors and software (factory expandable)
TVS-1112	10,230	Scanner, 12 velocity/temperature sensors and software (factory expandable)
TVS-1120	14,525	Scanner, 20 velocity/temperature sensors and software (factory expandable)
TVS-1132	21,005	Scanner, 32 velocity/temperature sensors and software

## Accessories

Model No.	Price	Description
TVS-1000-RP	\$285	Replacement velocity/temperature sensor with calibration reference book
TVS-1000-PS	144	Replacement power cord and power supply

Comes complete with calibrated sensors, scanner, analysis software, power cord and operator's manual.

**Ordering Examples:** TVS-1004, 4-channel with velocity/temperature sensors, and software, \$3630.

TVS-1108, expandable 8 channel scanner with sensors and software, \$8150.

Recommended Reference LED Book: Flow Measurement Engineering, OP-9, \$145, Visit [omega.com/bobi](http://omega.com/bobi) for Additional Books



#### UNITED STATES

[www.omega.com](http://www.omega.com)  
1-800-TC-OMEGA  
Stamford, CT.

#### CANADA

[www.omega.ca](http://www.omega.ca)  
Laval(Quebec)  
1-800-TC-OMEGA

#### GERMANY

[www.omega.de](http://www.omega.de)  
Deckenpfronn, Germany  
0800-8266342

#### UNITED KINGDOM

[www.omega.co.uk](http://www.omega.co.uk)  
Manchester, England  
0800-488-488

#### FRANCE

[www.omega.fr](http://www.omega.fr)  
Guyancourt, France  
088-466-342

#### CZECH REPUBLIC

[www.omegaeng.cz](http://www.omegaeng.cz)  
Karviná, Czech Republic  
596-311-899

#### BENELUX

[www.omega.nl](http://www.omega.nl)  
Amstelveen, NL  
0800-099-33-44



## More than 100,000 Products Available!

### • Temperature

Calibrators, Connectors, General Test and Measurement Instruments, Glass Bulb Thermometers, Handheld Instruments for Temperature Measurement, Ice Point References, Indicating Labels, Crayons, Cements and Lacquers, Infrared Temperature Measurement Instruments, Recorders Relative Humidity Measurement Instruments, RTD Probes, Elements and Assemblies, Temperature & Process Meters, Timers and Counters, Temperature and Process Controllers and Power Switching Devices, Thermistor Elements, Probes and Assemblies, Thermocouples Thermowells and Head and Well Assemblies, Transmitters, Wire

### • Flow and Level

Air Velocity Indicators, Doppler Flowmeters, Level Measurement, Magnetic Flowmeters, Mass Flowmeters, Pitot Tubes, Pumps, Rotameters, Turbine and Paddle Wheel Flowmeters, Ultrasonic Flowmeters, Valves, Variable Area Flowmeters, Vortex Shedding Flowmeters

### • pH and Conductivity

Conductivity Instrumentation, Dissolved Oxygen Instrumentation, Environmental Instrumentation, pH Electrodes and Instruments, Water and Soil Analysis Instrumentation

### • Data Acquisition

Auto-Dialers and Alarm Monitoring Systems, Communication Products and Converters, Data Acquisition and Analysis Software, Data Loggers Plug-in Cards, Signal Conditioners, USB, RS232, RS485 and Parallel Port Data Acquisition Systems, Wireless Transmitters and Receivers

### • Pressure, Strain and Force

Displacement Transducers, Dynamic Measurement Force Sensors, Instrumentation for Pressure and Strain Measurements, Load Cells, Pressure Gauges, Pressure Reference Section, Pressure Switches, Pressure Transducers, Proximity Transducers, Regulators, Strain Gages, Torque Transducers, Valves

### • Heaters

Band Heaters, Cartridge Heaters, Circulation Heaters, Comfort Heaters, Controllers, Meters and Switching Devices, Flexible Heaters, General Test and Measurement Instruments, Heater Hook-up Wire, Heating Cable Systems, Immersion Heaters, Process Air and Duct, Heaters, Radiant Heaters, Strip Heaters, Tubular Heaters