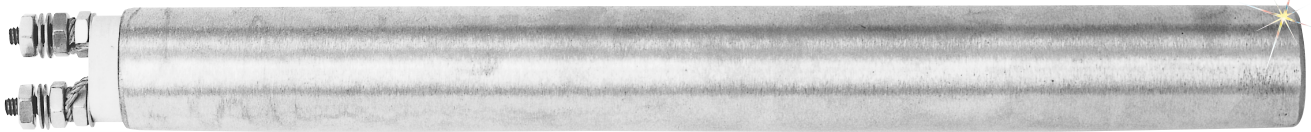


HEAVY DUTY CARTRIDGE HEATERS



C-HD Series Starts at

\$95

- ✓ Reliable, Premium Quality
- ✓ CSA Certified
- ✓ Lengths from 2½ to 25"
- ✓ 120 and 240 Vac Models

OMEGALUX® C Series heavy-duty cartridge heaters are especially suited for use in applications involving hot plates, molds, dies, platens and container heating.

Specifications

Sheath: Brass

Terminations: 2 bolt terminals #8-32 th'd, one end

Working Temperature: Up to 315°C (600°F) max

C-704/120, \$110, shown smaller than actual size.

1" Diameter

To Order (Specify Model Number)					
Shth. Lgth.	Watts	W/In ²	Model No.	Price	Wt (Lb)
3½"	300	35	C-703/*	\$95	0.31
4"	375	28	C-704/*	110	0.5
6"	600	33	C-705/*	125	0.63
7"	500	22	C-706/*	137	0.75
9"	700	26	C-707/*	157	0.75
10"	750	23	C-708/120	165	1
10"	750	23	C-708/240	165	1
12"	800	22	C-709/120	185	1.13
12"	800	22	C-709/240	185	1.13
18"	1250	23	C-713/*	245	1.75
3"	165	21	C-702/*	90	0.31
21"	1300	21	C-714/240	260	2.1
23"	1425	20	C-715/240	285	2.2
25"	1375	18	C-716/240	315	2.25

* C Series Cartridge heaters are available in 120 or 240 Vac. To order, add specified voltage as a suffix.

Ordering Example: C-702/240 165 Watt heater, 3½" sheath powered by 240 Vac, \$90.

1 19/64" Diameter

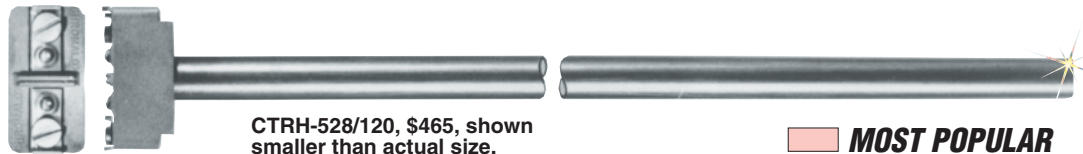
MOST POPULAR MODELS HIGHLIGHTED!

Shth. Lgth.	Watts	W/In ²	Model	Price	Wt (Lb)
3½"	350	33	C-803/*	\$105	0.5
4"	600	37	C-806/*	120	0.75
7"	1000	37	C-830/*	150	1.25
7"	1200	44	C-810/*	150	1.25
10½"	1000	26	C-812/*	175	1.75
4"	300	19	C-804/*	115	0.75
6"	500	23	C-807/*	135	1
7"	500	18	C-808/*	145	1.25
9"	650	20	C-811/*	160	1.5
11"	750	17	C-813/*	187	2
14"	1250	22	C-815/*	215	2.25
16"	1300	21	C-816/*	230	2.75
17"	1400	20	C-817/240	250	3
20"	1625	20	C-819/240	275	3.5
24"	1780	18	C-822/240	327	3.75

CTRH Series Starts at

\$335

- ✓ 0.553 and 0.66" Dia.
- ✓ 1670 to 5130 Watts
- ✓ 120, 208, 240 and 480 Vac
- ✓ 50 and 55 W/in²
- ✓ 304 Stainless Steel Sheath



CTRH-528/120, \$465, shown smaller than actual size.

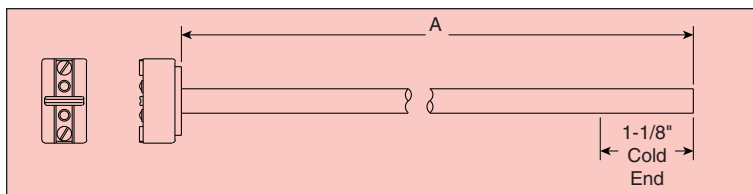
MOST POPULAR MODELS HIGHLIGHTED!

To Order (Specify Model Number)						
Dia. (in.)	Shth Lgth	Watts	W/In ²	Model No.	Price	Weight (Lb)
0.553	20"	1670	55	CTRH-520/120	\$335	1.3
0.553	24	2475	55	CTRH-524/*	385	1.5
0.553	28	2440	55	CTRH-528/*	465	1.8
0.553	32	2820	55	CTRH-532/*	575	2
0.553	36	3200	55	CTRH-536/†	715	2.3
0.553	40	3580	55	CTRH-540/†	900	2.5
0.553	44	3970	55	CTRH-544/†	975	2.8
0.553	48	4350	55	CTRH-548/#	1025	3
0.553	52	4730	55	CTRH-552/#	1050	3.3
0.66	20	1810	50	CTRH-620/120	395	1.6
0.66	24	2475	50	CTRH-624/*	480	1.8
0.66	28	2640	50	CTRH-628/*	600	2.1
0.66	32	3060	50	CTRH-632/*	750	2.4
0.66	36	3470	50	CTRH-636/†	950	2.7
0.66	40	3880	50	CTRH-640/†	975	3
0.66	44	4300	50	CTRH-644/#	1000	3.3
0.66	48	4610	50	CTRH-648/#	1050	3.6
0.66	52	5130	50	CTRH-652/#	1100	3.9

* CTRH Cartridge heaters are available in 120, 208 or 240 Vac.

† Heaters available in 208 or 240 Vac. # Heaters available in 208, 240 or 480 Vac. To order, add specified voltage as a suffix.

Ordering Example: CTRH-528/240 2440 Watt heater, 28" sheath powered by 240 Vdc, \$465.



APPLICATIONS

- ✓ Forming
- ✓ Stress Relieving Metal Parts
- ✓ Dies
- ✓ Platens

CONSTRUCTION

Type CTRH is an extra high-quality cartridge heater. It is available in 0.553 and 0.663" diameter, sheath lengths up to 4½ feet, and 50 to 55 W/in² to heat materials up to 427°C (800°F).



UNITED STATES

www.omega.com
1-800-TC-OMEGA
Stamford, CT.

CANADA

www.omega.ca
Laval(Quebec)
1-800-TC-OMEGA

GERMANY

www.omega.de
Deckenpfronn, Germany
0800-8266342

UNITED KINGDOM

www.omega.co.uk
Manchester, England
0800-488-488

FRANCE

www.omega.fr
Guyancourt, France
088-466-342

CZECH REPUBLIC

www.omegaeng.cz
Karviná, Czech Republic
596-311-899

BENELUX

www.omega.nl
Amstelveen, NL
0800-099-33-44



More than 100,000 Products Available!

• Temperature

Calibrators, Connectors, General Test and Measurement Instruments, Glass Bulb Thermometers, Handheld Instruments for Temperature Measurement, Ice Point References, Indicating Labels, Crayons, Cements and Lacquers, Infrared Temperature Measurement Instruments, Recorders Relative Humidity Measurement Instruments, RTD Probes, Elements and Assemblies, Temperature & Process Meters, Timers and Counters, Temperature and Process Controllers and Power Switching Devices, Thermistor Elements, Probes and Assemblies, Thermocouples Thermowells and Head and Well Assemblies, Transmitters, Wire

• Flow and Level

Air Velocity Indicators, Doppler Flowmeters, Level Measurement, Magnetic Flowmeters, Mass Flowmeters, Pitot Tubes, Pumps, Rotameters, Turbine and Paddle Wheel Flowmeters, Ultrasonic Flowmeters, Valves, Variable Area Flowmeters, Vortex Shedding Flowmeters

• pH and Conductivity

Conductivity Instrumentation, Dissolved Oxygen Instrumentation, Environmental Instrumentation, pH Electrodes and Instruments, Water and Soil Analysis Instrumentation

• Data Acquisition

Auto-Dialers and Alarm Monitoring Systems, Communication Products and Converters, Data Acquisition and Analysis Software, Data Loggers Plug-in Cards, Signal Conditioners, USB, RS232, RS485 and Parallel Port Data Acquisition Systems, Wireless Transmitters and Receivers

• Pressure, Strain and Force

Displacement Transducers, Dynamic Measurement Force Sensors, Instrumentation for Pressure and Strain Measurements, Load Cells, Pressure Gauges, Pressure Reference Section, Pressure Switches, Pressure Transducers, Proximity Transducers, Regulators, Strain Gages, Torque Transducers, Valves

• Heaters

Band Heaters, Cartridge Heaters, Circulation Heaters, Comfort Heaters, Controllers, Meters and Switching Devices, Flexible Heaters, General Test and Measurement Instruments, Heater Hook-up Wire, Heating Cable Systems, Immersion Heaters, Process Air and Duct, Heaters, Radiant Heaters, Strip Heaters, Tubular Heaters