



4002AJF, \$442.



4002AKF, \$442.



4002AKC, \$442.

All models shown smaller than actual size.

Panel Punches Available, Visit omega.com/panelpunches

1/4 DIN Temperature Controllers



4000A Series Starts at **\$407**

OMEGACARESM extended warranty program is available for models shown on this page. Ask your sales representative for full details when placing an order. OMEGACARESM covers parts, labor and equivalent loaners.

- J or K Thermocouple
- Accuracy: $\pm 0.5\%$ FS
- 1° Resolution
- Adjustable Proportional Band
- Single and Dual Setpoint Models
- Relay, Triac, or 4 to 20 mA Output
- 1/4 DIN Metal Case
- Full Plug-In Construction

The OMEGA® 4000A Series digital controller distinguishes itself by features, construction, and operation one would expect to find only in controllers costing much, much more. Bright, easy-to-read LED digits yield an unambiguous temperature indication which is not achievable with an analog controller. The standard unit includes adjustable proportional band, manual reset, plus a metal case with full plug-in construction,

allowing front removal of the entire control unit without disturbing the case and its rear wiring. Series 4000A controllers are available in single and dual setpoint models with relay outputs as a standard. Triac or 4 to 20 mA optional outputs are offered on the first point at no additional cost. Models 4001A and 4002A lend themselves to a broad spectrum of control applications: single point control, dual setpoint control, and single point control with either high or low limit alarm. Truly a quality-built controller at a remarkably low price.

Model 4001A Single Setpoint Proportional Controller

This versatile digital controller can be operated as a proportional controller with the bandwidth adjustable up to 0.5% of full scale. The setpoint temperature is always available. Simply push the spring-loaded setpoint switch to the right and the setpoint is digitally displayed. To change the setpoint, with the switch deflected to the right, adjust the knob to the right of the switch until you get the desired reading.

The standard model 4001A has an internal SPDT relay (7 A resistive at 120 Vac). This model is also available with optional Triac or 4 to 20 mA output in place of the relay. See Options and Specifications. Replacement relay module, Model R, \$35.

Model 4002A Dual Setpoint Controller

The first setpoint of the Model 4002A incorporates the same features as the 4001A and can also be ordered with the optional Triac or 4 to 20 mA output.

The second setpoint may be set at any value within the full span of the controller. It energizes the SPDT internal relay (3 A resistive, 120 Vac) which can be used either as an on-off control, a high limit alarm, or a low limit alarm. For an alarm with latching features an external latching relay and push button to reset are suggested.

The second setpoint is set and displayed using the same procedure as for the model 4001A, except the switch is deflected to the left and the left adjustment knob is used.

Option “T” Triac Output

Option “T” replaces the relay output on the first setpoint with a solid state plug-in Triac which yields time-proportional switching. The Triac is rated at 1 A continuous and 10 A in rush for both 120 and 240 Vac service. For higher amperage loads the Triac may be used to drive higher rating solid state relays or mechanical contractors. Specify option “T” after the model number when ordering, no additional charge. Replacement Triac, model **T**, \$35.

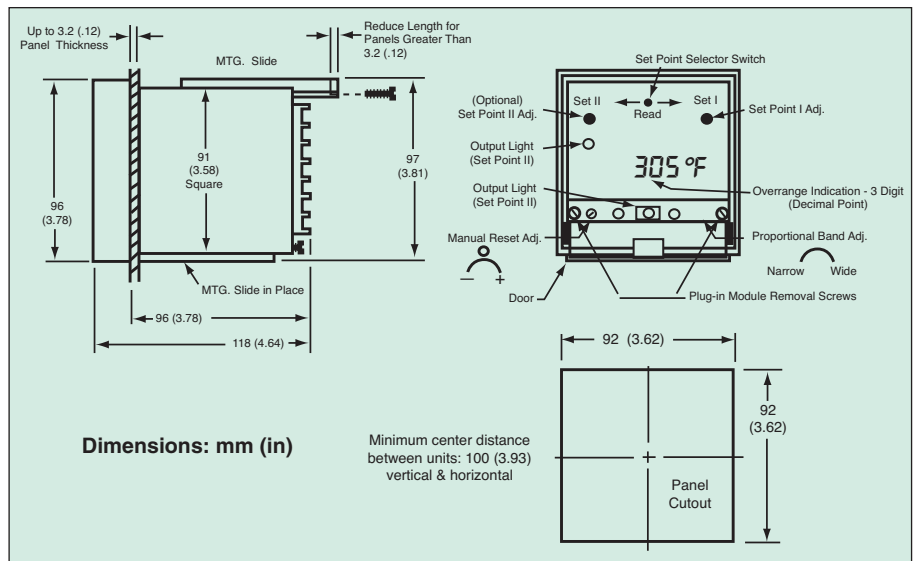
Option “F” (4 to 20 mA Output)

This option is applicable to the first setpoint only and is used to drive proportioning devices such as SCR power controller, motor positioners, or electropneumatic actuators. The 4 to 20 mA dc output signal can be connected to a maximum of 1000 Ω resistance load. This signal is 20 mA at the low temperature end of the proportional band and is decreased linearly through the band to 4 mA at the high temperature end. If the driven device is not isolated (ungrounded) an ungrounded thermocouple must be used with the Series 4000A which is designed for only one ground in the system. Specify option “F” after the model number when ordering, no additional charge. Replacement module, model **4001-F1**, \$37.

Specifications

Thermocouple Input

Thermocouples: Types J and K
Max. T/C Lead Resistance: 100 Ω for rated accuracy
Cold Junction Compensation: Automatic—electric
T/C Break Protection: Built in, upscale on open sensor
Calibration Accuracy:
 Type J: ±0.4% of span over 10 to 90% of range
 Type K: ±0.5% of span over 10 to 90% of range
Common Mode Rejection: Max error +1° with series mode signal of 100 mV PK-to-PK at 60 Hz



Control Output

1st Setpoint:

Relay (Standard Model): SPDT relay 7 A resistive at 120 Vac, 5 A resistive at 240 Vac

Option “T” (Triac): Solid state plug-in triac rated 1 A holding and 10 amps in-rush

Option “F” (Current Proportional): 4 to 20 mA (dc) into 1000 Ω max

2nd Setpoint:

Relay (On-Off Only): SPDT, rated 3 A at 120 Vac

Adjustments

Proportional Band (Gain): Up to 5% of span, or on-off; selectable

Manual Reset (Off-Set): Adjustable

Cycle Time: Automatically adjusts with load requirement to give least wear with minimum ripple (selectable min. total time: 0.5, 1, 1.5, 5, 10, 15 sec)

Display and Indications

Temperature: Filtered LED, 3 or 3½ digits, 2 readings per second update; readability is 1°C for 1°F

Setpoint: By spring loaded switch, first or second setpoint is displayed in place of temperature; Setpoint adjusted by 25 turn pot.; 1°F or °C set-ability

Outputs: LED indication for both first and second setpoints; LED are “on” when output drive signal present; “on-off” indication on relay and triac model; proportional intensity for option “F.”

Temperature Overrange:

Red LED indication

Setpoint

Resolution: 1°C or 1°F

Repeatability: ±0.1% to ±0.2% of span

Adjustment: By 25 turn pot.; see “Setpoint” under “Display and Indication” section.

Power: 120/240 Vac (+10%, -15%, 50/60 Hz). Power consumption less than 5 watts

Environmental & Physical

Operating Temperature: 30 to 130°F

Weight: 1 kg (2 lb)

¼ DIN Case: Metal, full plug-in with screw terminal on rear. Adjustable brackets for panel mounting; panel cutout is 3.622 x 3.622”

MOST POPULAR MODELS HIGHLIGHTED!

Model No.	Price	Sensor Type	Material Type	Range	Resolution	Number of Setpoints
4001AJF 4001AJC	\$407	J	Iron/Constantan (Iron vs. Copper-Nickel)	0 to 999°F	1°F	Single
				0 to 500°C	1°C	
4002AJF 4002AJC	442	K	CHROMEGLA®-ALOMEGA® (Nickel/Chromium vs. Nickel/Aluminum)	0 to 999°F	1°F	Dual
				0 to 500°C	1°C	
4001AKF 4001AKC	407	K	CHROMEGLA®-ALOMEGA® (Nickel/Chromium vs. Nickel/Aluminum)	0 to 1999°F	1°F	Single
				0 to 999°C	1°C	
4002AKF 4002AKC	442	K	CHROMEGLA®-ALOMEGA® (Nickel/Chromium vs. Nickel/Aluminum)	0 to 1999°F	1°F	Dual
				0 to 999°C	1°C	

Accessories

Model No.	Price	Description
DPP-6	\$575	¼ DIN panel punch
OP-SET1/2	35	Reference Book: Temperature Measurement in Engineering Vol 1 & 2

Comes complete with operator's manual.

Ordering Examples: 4001AJF, Type J, thermocouple input, °F, single setpoint controller, \$407. OCW-3, OMEGACARESM extends standard 2-year warranty to a total of 5 years (\$102), \$407 + 102 = \$509.

4002AKC, Type K thermocouple input, °C, dual setpoint controller, \$442.



UNITED STATES

www.omega.com
1-800-TC-OMEGA
Stamford, CT.

CANADA

www.omega.ca
Laval(Quebec)
1-800-TC-OMEGA

GERMANY

www.omega.de
Deckenpfronn, Germany
0800-8266342

UNITED KINGDOM

www.omega.co.uk
Manchester, England
0800-488-488

FRANCE

www.omega.fr
Guyancourt, France
088-466-342

CZECH REPUBLIC

www.omegaeng.cz
Karviná, Czech Republic
596-311-899

BENELUX

www.omega.nl
Amstelveen, NL
0800-099-33-44



More than 100,000 Products Available!

• Temperature

Calibrators, Connectors, General Test and Measurement Instruments, Glass Bulb Thermometers, Handheld Instruments for Temperature Measurement, Ice Point References, Indicating Labels, Crayons, Cements and Lacquers, Infrared Temperature Measurement Instruments, Recorders Relative Humidity Measurement Instruments, RTD Probes, Elements and Assemblies, Temperature & Process Meters, Timers and Counters, Temperature and Process Controllers and Power Switching Devices, Thermistor Elements, Probes and Assemblies, Thermocouples Thermowells and Head and Well Assemblies, Transmitters, Wire

• Flow and Level

Air Velocity Indicators, Doppler Flowmeters, Level Measurement, Magnetic Flowmeters, Mass Flowmeters, Pitot Tubes, Pumps, Rotameters, Turbine and Paddle Wheel Flowmeters, Ultrasonic Flowmeters, Valves, Variable Area Flowmeters, Vortex Shedding Flowmeters

• pH and Conductivity

Conductivity Instrumentation, Dissolved Oxygen Instrumentation, Environmental Instrumentation, pH Electrodes and Instruments, Water and Soil Analysis Instrumentation

• Data Acquisition

Auto-Dialers and Alarm Monitoring Systems, Communication Products and Converters, Data Acquisition and Analysis Software, Data Loggers Plug-in Cards, Signal Conditioners, USB, RS232, RS485 and Parallel Port Data Acquisition Systems, Wireless Transmitters and Receivers

• Pressure, Strain and Force

Displacement Transducers, Dynamic Measurement Force Sensors, Instrumentation for Pressure and Strain Measurements, Load Cells, Pressure Gauges, Pressure Reference Section, Pressure Switches, Pressure Transducers, Proximity Transducers, Regulators, Strain Gages, Torque Transducers, Valves

• Heaters

Band Heaters, Cartridge Heaters, Circulation Heaters, Comfort Heaters, Controllers, Meters and Switching Devices, Flexible Heaters, General Test and Measurement Instruments, Heater Hook-up Wire, Heating Cable Systems, Immersion Heaters, Process Air and Duct, Heaters, Radiant Heaters, Strip Heaters, Tubular Heaters