

# Linear Thermistor Components and Probes

OL-705-PP air probe, \$73, shown with Model 5830, \$890, sold separately, see Page M-96.



## Linear Response Components

For applications requiring thermistors with linear response to temperature change, OMEGA offers linear components. These unique devices consist of a thermistor composite for temperature sensing and an external resistor composite for linearizing.

Thermistor composites 44018 and 44019 each contain two thermistors packaged in a single sensor (Figures 1A and 1B). Thermistor composite 44020 contains three thermistors packaged in a single sensor (Figure 1C).

Resistor composites for use with 44018 and 44019 thermistor composites consist of two metal film resistors of the size shown in Figure 2. Resistor composites for use with the 44020 thermistor composite consist of three of the same type metal film resistors.

Linear components are manufactured with different values for different temperatures ranges. When they are connected in networks shown in Figures 3 (A and B) and 4 (A and B), they produce a varying voltage or resistance which is linear with temperature.

One of the basic network manifestations is a voltage divider as in Figure 3A for components other than #44212, and as shown in Figure 3B for component #44212. The area within the dashed lines represents the thermistor composite. The network hookup for linear resistance versus temperature is shown in Figure 4A for linear components except #44212, and in Figure 4B for #44212.

## Linear Voltage vs. Temperature

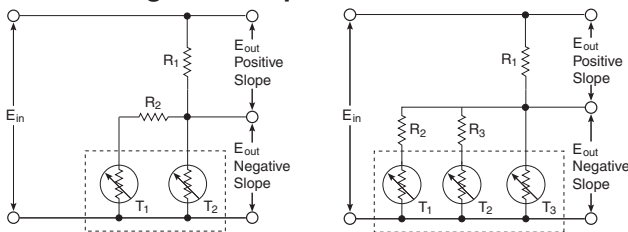


Figure 3A

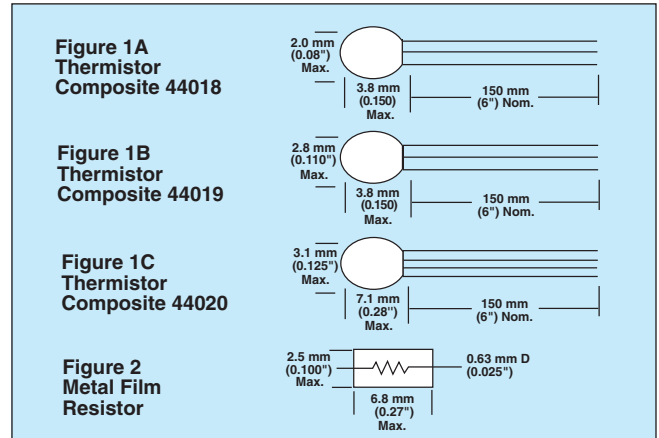
Figure 3B

**Note:** Model 5830 precision benchtop thermometer includes linearized circuitry, refer to section M.

Following is a description of why these networks produce linear information. The equation for a voltage divider network, consisting of R and  $R_0$  in series, is:

$$E_{out} = E_{in} \frac{R}{R + R_0}$$

where  $E_{out}$  is the voltage drop across R. If R is a thermistor, and  $E_{out}$  is plotted versus temperature, the total curve will be essentially non-linear and of a general "S" shape, with linear or nearly linear portions near the ends and in the center.



If R is modified by the addition of other thermistors and resistors, linearity of the center section of the curve, where sensitivity is greatest, can be extended to cover a wide range of temperatures. This section follows the general equation for a straight line,  $y = mx + b$  or in terms of a linear component:

### For Voltage Mode

$$E_{out} = \pm MT + b$$

where M is slope in volts/ $^{\circ}$ T,  
T is temperature in  $^{\circ}$ C or  $^{\circ}$ F, and  
b is the value of  $E_{out}$  when  $T = 0^{\circ}$

### For Resistance Mode

$$R_t = MT + b$$

where M is slope in ohms/ $^{\circ}$ T,  
T is temperature in  $^{\circ}$ C or  $^{\circ}$ F, and  
b is the value of the total network resistance,  $R_t$ , in ohms when  $T = 0^{\circ}$

## Linear Resistance vs. Temperature

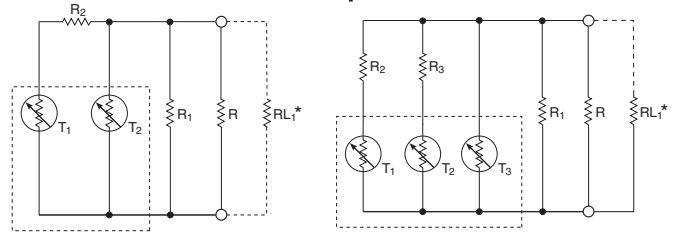


Figure 4A

Figure 4B

\* $RL_1$  may be any value as long as a new  $R_1$  value ( $R_{1A}$ ) is selected to satisfy the relationship:  $R_{1A} = \frac{R_1 \times RL_1}{RL_1 - R_1}$



Sensitivity is 400 times greater than an IC thermocouple. Thermistor values as high as 30 mV/°C are common. In addition, output voltage can be applied to a recorder or digital voltmeter to produce a precise, sensitive, direct reading thermometer.

### Multiplexing

The 44018 thermistor composite is used in four of the linear components. The part that changes in each component is the resistor composite, which determines the temperature range. Therefore, the 44018 thermistor composite can be used over the entire -30 to 100°C temperature range by simply changing resistor composites. Its accuracy and interchangeability over the full range is ±0.15°C. It is not mandatory that OMEGA® resistor composites be used with the 44018 thermistor composite. Any 0.1% resistors of the proper values and with a temperature

coefficient of 30 PPM or less may be substituted. In other situations, it is frequently desirable to have thermistor composite temperature sensors at more than one location. When this is required, it is not necessary to have a separate resistor composite for each

thermistor composite. It is possible to multiplex any number of thermistor composites through a single resistor composite for greater design flexibility



**MOST POPULAR MODELS HIGHLIGHTED!**

To Order (Specify Model Number)					
Linear Kit† Model No.	Price	Thermistor Composite Model No.	Price	Resistor Composite Model No.	Price
44201	\$37	44018	\$28	44301	\$12
44202	37	44018	28	44302	12
44203	37	44018	28	44303	12
44204	37	44018	28	44304	12
44211A	57	44019	42	44311A	12
44212	90	44020	64	44312	19

See the next page for more information.

**Ordering Examples:** 44203, linear kit, 44018, dual thermistor composite plus 44303, resistor composite sensor, \$37 + 28 + 12 = \$77.

44202, linear kit, 44018, dual thermistor composite plus 44302, resistor composite sensor, \$37 + 28 + 12 = \$77.

## Component Specifications

	°C		°F	
† Linear Components Kit Model No.	44201		44202	
Range	0 to 100°C	32 to 212°F	-5 to 45°C	23 to 113°F
Thermistor Composite Model No.	44018		44018	
Resistor Composite Model No.	44301		44302	
Resistor Composite Values	R <sub>1</sub> = 3200 Ω, R <sub>2</sub> = 6250 Ω		R <sub>1</sub> = 5700 Ω, R <sub>2</sub> = 12000 Ω	
Thermistor Accuracy & Interchangeability	±0.15°C -30 to 100°C	±0.27°F -22 to 212°F	±0.15°C -30 to 100°C	±0.27°F -22 to 212°F
E <sub>0</sub> Positive Slope	E <sub>out</sub> = (+0.0053483 E <sub>in</sub> ) T +0.13493 E <sub>in</sub>	E <sub>out</sub> = (+0.00297127 E <sub>in</sub> ) T +0.03985 E <sub>in</sub>	E <sub>out</sub> = (+0.0056846 E <sub>in</sub> ) T +0.194142 E <sub>in</sub>	E <sub>out</sub> = (+0.00315851 E <sub>in</sub> ) T +0.093083 E <sub>in</sub>
E <sub>0</sub> Negative Slope	E <sub>out</sub> = (-0.0053483 E <sub>in</sub> ) T +0.86507 E <sub>in</sub>	E <sub>out</sub> = (-0.00297127 E <sub>in</sub> ) T +0.96015 E <sub>in</sub>	E <sub>out</sub> = (-0.0056846 E <sub>in</sub> ) T +0.805858 E <sub>in</sub>	E <sub>out</sub> = (-0.00315851 E <sub>in</sub> ) T +0.906917 E <sub>in</sub>
Resistance Mode	R <sub>t</sub> = (-17.115) T +2768.23	R <sub>t</sub> = (-9.508) T +3072.48	R <sub>t</sub> = (-32.402) T +4593.39	R <sub>t</sub> = (-18,001) T +5169.42
*E <sub>in</sub> MAX	2.0 Volts		3.5 Volts	
*I <sub>T</sub> MAX	625 μA		615 μA	
***Load Resistance Minimum R.L.	3 MΩ		10 MΩ	
Linearity Deviation	±0.216°C	±0.388°F	±0.065°C	±0.12°F

\* E<sub>in</sub> Max and \*I<sub>T</sub> Max values have been assigned to control thermistor self-heating errors so they do not enlarge the component error band; i.e., the sum of the linearity deviation plus the probe tolerances. The values were assigned using a thermistor dissipation constant of 8MW/°C in stirred oil. If better heat-sink methods are used or if an enlargement of the error band is acceptable, E<sub>in</sub> Max. and I<sub>T</sub> Max values may be exceeded without damage to the thermistor probe.

\*\*\* See Figure 1, example 1 on typical linear component application page D-45.

†† Kit includes thermistor composite and resistors.

	°C		°F		°C		°F	
<b>Linear Components Kit Model Number†</b>	<b>44203</b>				<b>44204</b>			
<b>Range</b>	-30 to 50°C		-22 to 122°F		-2 to 38°C		+30 to 100°F	
<b>Thermistor Composite Model Number</b>	<b>44018</b>				<b>44018</b>			
<b>Resistor Composite Model Number</b>	<b>44303</b>				<b>44304</b>			
<b>Resistor Composite Values</b>	R <sub>1</sub> = 18,700 Ω R <sub>2</sub> = 35,250 Ω				R <sub>1</sub> = 5700 Ω R <sub>2</sub> = 12,400 Ω			
<b>Thermistor Accuracy &amp; Interchangeability</b>	±0.15°C -30 to 100°C		±0.27°F -22 to +212°F		±0.15°C -2 to +38°C		±0.27°F -22 to +212°F	
<b>E<sub>0</sub> Positive Slope</b>	E <sub>out</sub> = (+0.0067966 E <sub>in</sub> ) T +0.34893 E <sub>in</sub>		E <sub>out</sub> = (+0.00377588 E <sub>in</sub> ) T +0.228102 E <sub>in</sub>		E <sub>out</sub> = (+0.00563179 E <sub>in</sub> ) T +0.192439 E <sub>in</sub>		E <sub>out</sub> = (+0.0031289 E <sub>in</sub> ) T +0.09232 E <sub>in</sub>	
<b>E<sub>0</sub> Negative Slope</b>	E <sub>out</sub> = (-0.0067966 E <sub>in</sub> ) T +0.65107 E <sub>in</sub>		E <sub>out</sub> = (-0.00377588 E <sub>in</sub> ) T +0.771898 E <sub>in</sub>		E <sub>out</sub> = (-0.00563179 E <sub>in</sub> ) T +0.807563 E <sub>in</sub>		E <sub>out</sub> = (-0.0031289 E <sub>in</sub> ) T +0.90768 E <sub>in</sub>	
<b>Resistance Mode</b>	R <sub>t</sub> = (-127.096) T +12175		R <sub>t</sub> = (-70.608) T +14435		R <sub>t</sub> = (-32.1012) T +4603.1		R <sub>t</sub> = (-17,834) T +5173.8	
<b>E<sub>in</sub> MAX*</b>	3.0 Volts				4 Volts			
<b>I<sub>T</sub> MAX***</b>	475 μA				685 μA			
<b>Load Resistance Minimum R.L.***</b>	10 MΩ				10 MΩ			
<b>Linearity Deviation</b>	±0.16°C		±0.29°F		±0.03°C		±0.055°F	
<b>Linear Components Kit Model Number†</b>	<b>44211A</b>				<b>44212</b>			
<b>Range</b>	-55 to 85°C		-67 to 185°F		-50 to 50°C		-58 to 122°F	
<b>Thermistor Composite Model Number</b>	<b>44019</b>				<b>44020</b>			
<b>Resistor Composite Model Number</b>	<b>44311A</b>				<b>44312</b>			
<b>Resistor Composite Values</b>	R <sub>1</sub> = 3550 Ω, R <sub>2</sub> = 6025 Ω				R <sub>1</sub> = 23,100 Ω R <sub>2</sub> = 88,200 Ω R <sub>3</sub> = 38,000 Ω			
<b>Thermistor Accuracy &amp; Interchangeability</b>	±0.4°C, 0 to 85°C ±0.8°C, -55 to 0°C		±0.72, 32 to 185°F ±1.44, -67 to 32°F		±0.1°C -50 to 50°C		±0.18°F -58 to 122°F	
<b>E<sub>0</sub> Positive Slope</b>	E <sub>out</sub> = (+0.005068 E <sub>in</sub> ) T +0.3411 E <sub>in</sub>		E <sub>out</sub> = (+0.002816 E <sub>in</sub> ) T +0.2510 E <sub>in</sub>		E <sub>out</sub> = (+0.00559149 E <sub>in</sub> ) T +0.40700 E <sub>in</sub>		E <sub>out</sub> = (+0.00310638 E <sub>in</sub> ) T +0.30760 E <sub>in</sub>	
<b>E<sub>0</sub> Negative Slope</b>	E <sub>out</sub> = (-0.005068 E <sub>in</sub> ) T +0.6589 E <sub>in</sub>		E <sub>out</sub> = (-0.002816 E <sub>in</sub> ) T +0.7490 E <sub>in</sub>		E <sub>out</sub> = (-0.00559149 E <sub>in</sub> ) T +0.59300 E <sub>in</sub>		E <sub>out</sub> = (-0.00310638 E <sub>in</sub> ) T +0.69240 E <sub>in</sub>	
<b>Resistance Mode</b>	R <sub>t</sub> = (-17.99) T +2339		R <sub>t</sub> = (-9.994) T +2658.8		R <sub>t</sub> = (-129.163) T +13698.23		R <sub>t</sub> = (-71.757) T +15994.5	
<b>E<sub>in</sub> MAX.*</b>	2.0 Volts				3.5 Volts			
<b>I<sub>T</sub> MAX.***</b>	833 μA				700 μA			
<b>Load Resistance Minimum R.L.***</b>	10 MΩ				10 MΩ			
<b>Linearity Deviation</b>	±1.1°C		±2°F		±0.15°C (condition A)** ±0.08°C (condition B)**		±0.27°F (A) ±0.15°F (B)	

\*\* The maximum error at any point is the algebraic sum of the thermistor manufacturing tolerances, plus linearity deviation, a fixed network behavior. Condition "A" is the worst case linearity deviation of ±0.15°C and may occur with the ±0.1% resistors supplied. Condition "B" exists when the three resistors are within ±0.02% of nominal, which reduces linearity deviation to ±0.08°C.

Note: The time required for a thermistor composite to indicate 63% of a newly impressed temperature is one second in "well stirred" oil and ten seconds in free, still air.

†† Kit includes thermistor composite and resistors.

# Typical Linear Component Applications

## Example 1:

To measure and record on a 100 mV recorder temperature in the range 30 to 40°C.

- Select Part number 44202 (temperature range -5° to +45°C)  
basic equation  $E_{out1} = (-0.0056846 E_{in}) T + 0.805858 E_{in}$
- Calculate  $E_{in}$  for 10°C equal to 100 mV

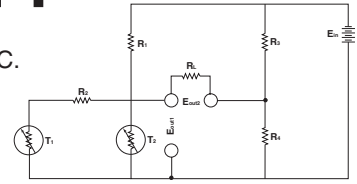


Figure 1

$$\begin{aligned} (E_{out, @30^\circ C} - E_{out1 @ 40^\circ C}) &= 100 \text{ mV} \\ [(-0.0056846 E_{in}) 30^\circ C + 0.805858 E_{in}] - [(-0.0056846 E_{in}) 40^\circ C + 0.805858 E_{in}] &= 100 \text{ mV} \\ 0.056846 E_{in} &= 100 \text{ mV} \\ E_{in} &= 1.7591 \text{ Volts} \end{aligned}$$

- Using the Linear network as two legs of a Wheatstone bridge add the two additional legs,  $R_3$  and  $R_4$  so that  $E_{out2} = 0$  when  $T = 30^\circ C$ . (See Figure 1.)  $R_3$  and  $R_4$  are calculated from five known conditions.
  - The voltage drop across  $R_4$  ( $E_{R4}$ ) should equal  $E_{out1}$  at  $30^\circ C$  for  $E_{out2}$  to equal zero.
  - $E_{in} = 1.7591$  Volts
  - $1000 \text{ ohms} \leq R_3 + R_4 \leq 5000 \text{ ohms}$ . (If  $R_3 + R_4$  is less than 1 K, excessive battery drain may occur. If  $R_3 + R_4$  is more than 5 K, some degradation of linearity will occur.)

$$(4) E_{R4} = \frac{E_{in} R_4}{R_3 + R_4}$$

$$(5) E_{out1} = -0.0056846 (1.7591 \text{ Volts}) (+30^\circ C) + 0.805858 (1.7591 \text{ Volts}) = 1.1180 \text{ Volts}$$

$$E_{R4} = E_{out1} = E_{R4} = \frac{E_{in} R_4}{R_3 + R_4} \text{ or } 1.1180 = \frac{R_4 \cdot 1.7591}{R_3 + R_4} \text{ and let us choose } R_3 + R_4 = 1000 \text{ ohms.}$$

$$\text{Solve for } R_3 \text{ and } R_4 \quad 1.1180 = \frac{R_4 \cdot 1.7591}{R_4 + 100 - R_4} \quad R_4 = 635.55 \text{ ohms} \\ R_3 = 364.45 \text{ ohms}$$

- Apply  $E_{out2}$  to the recorder input terminals and the result is a direct reading 10°C full scale thermometer.

## Example 2:

To make a 4 digit 100 mV sensitivity digital voltmeter into a direct reading differential thermometer whose ambient range is -30 to 40°C;

- Select Part number 44203 (temperature range -30 to 50°C)  
basic equation  $E_{out} = (-0.0067966 E_{in}) T + 0.65107 E_{in}$
- Calculate  $E_{in}$  so that 10 mV equals one degree C. (This is done so that the Digital Volt Meter will read directly in temperature with 0.01°C readability)

$$\begin{aligned} (E_{out, @ -30^\circ C} - E_{out, @ +40^\circ C}) &= 0.700 \text{ Volts} \\ [(-0.0067966 E_{in})(-30) + 0.65107 E_{in}] - [(-0.0067966 E_{in})(40) + 0.65107 E_{in}] &= 0.700 \\ 0.47576 E_{in} &= 0.700 \\ E_{in} &= 1.4713 \text{ Volts} \end{aligned}$$

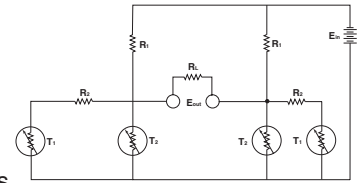


Figure 2

- Connect two linear networks (#44203) as shown in Fig. 2.
- Apply  $E_{out}$  to the Digital Volt Meter input terminals for a direct reading differential thermometer.

## Example 3:

To make a 2-wire system from a 3-wire system using any Linear component:

- For voltage mode, connect  $R_2$  to the thermistor composite. (See Figure 3.) This unit can function as the temperature sensor and be located remote from the signal conditioning circuit by up to distance "D".
- The resistance mode differs from the voltage mode only by removal of the power source. (See Figure 4.)
- Acceptable distance "D" varies according to the temperature range. Using #22 wire "D" may be as follows without loss of accuracy in both 2-wire and 3-wire systems. Where distance "D" is greater than indicated, heavier gauge wire may be used.

Temperature Range	Distance "D"
0 to 100°C	30 m (100')
-5 to 45°C	91 m (300')
-30 to 50°C	91 m (300')
30 to 100°C	91 m (300')

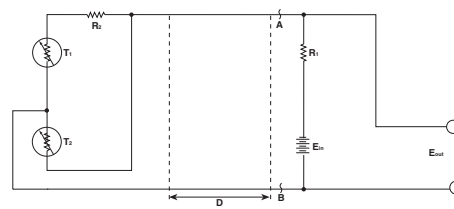


Figure 3 Voltage Mode

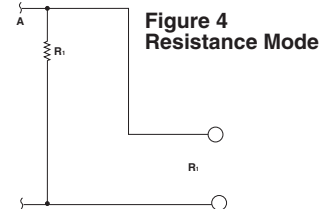


Figure 4 Resistance Mode

## Example 4:

Multiplexing to connect any number of thermistor composites to a single signal conditioning circuit. (See Figure 5.) Multiplexing can be accomplished much more easily with a two-wire system, such as shown in Figure 5.

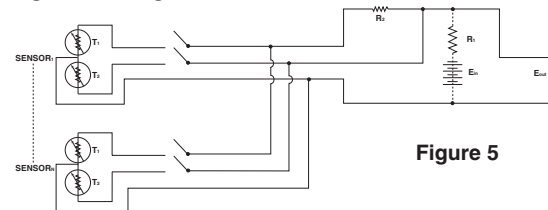


Figure 5

## Lead Colors:

**Green:** Common to T1 & T2  
**Brown:** T1                      **Red:** T2



#### UNITED STATES

[www.omega.com](http://www.omega.com)  
1-800-TC-OMEGA  
Stamford, CT.

#### CANADA

[www.omega.ca](http://www.omega.ca)  
Laval(Quebec)  
1-800-TC-OMEGA

#### GERMANY

[www.omega.de](http://www.omega.de)  
Deckenpfronn, Germany  
0800-8266342

#### UNITED KINGDOM

[www.omega.co.uk](http://www.omega.co.uk)  
Manchester, England  
0800-488-488

#### FRANCE

[www.omega.fr](http://www.omega.fr)  
Guyancourt, France  
088-466-342

#### CZECH REPUBLIC

[www.omegaeng.cz](http://www.omegaeng.cz)  
Karviná, Czech Republic  
596-311-899

#### BENELUX

[www.omega.nl](http://www.omega.nl)  
Amstelveen, NL  
0800-099-33-44



## More than 100,000 Products Available!

### • Temperature

Calibrators, Connectors, General Test and Measurement Instruments, Glass Bulb Thermometers, Handheld Instruments for Temperature Measurement, Ice Point References, Indicating Labels, Crayons, Cements and Lacquers, Infrared Temperature Measurement Instruments, Recorders Relative Humidity Measurement Instruments, RTD Probes, Elements and Assemblies, Temperature & Process Meters, Timers and Counters, Temperature and Process Controllers and Power Switching Devices, Thermistor Elements, Probes and Assemblies, Thermocouples Thermowells and Head and Well Assemblies, Transmitters, Wire

### • Flow and Level

Air Velocity Indicators, Doppler Flowmeters, Level Measurement, Magnetic Flowmeters, Mass Flowmeters, Pitot Tubes, Pumps, Rotameters, Turbine and Paddle Wheel Flowmeters, Ultrasonic Flowmeters, Valves, Variable Area Flowmeters, Vortex Shedding Flowmeters

### • pH and Conductivity

Conductivity Instrumentation, Dissolved Oxygen Instrumentation, Environmental Instrumentation, pH Electrodes and Instruments, Water and Soil Analysis Instrumentation

### • Data Acquisition

Auto-Dialers and Alarm Monitoring Systems, Communication Products and Converters, Data Acquisition and Analysis Software, Data Loggers Plug-in Cards, Signal Conditioners, USB, RS232, RS485 and Parallel Port Data Acquisition Systems, Wireless Transmitters and Receivers

### • Pressure, Strain and Force

Displacement Transducers, Dynamic Measurement Force Sensors, Instrumentation for Pressure and Strain Measurements, Load Cells, Pressure Gauges, Pressure Reference Section, Pressure Switches, Pressure Transducers, Proximity Transducers, Regulators, Strain Gages, Torque Transducers, Valves

### • Heaters

Band Heaters, Cartridge Heaters, Circulation Heaters, Comfort Heaters, Controllers, Meters and Switching Devices, Flexible Heaters, General Test and Measurement Instruments, Heater Hook-up Wire, Heating Cable Systems, Immersion Heaters, Process Air and Duct, Heaters, Radiant Heaters, Strip Heaters, Tubular Heaters