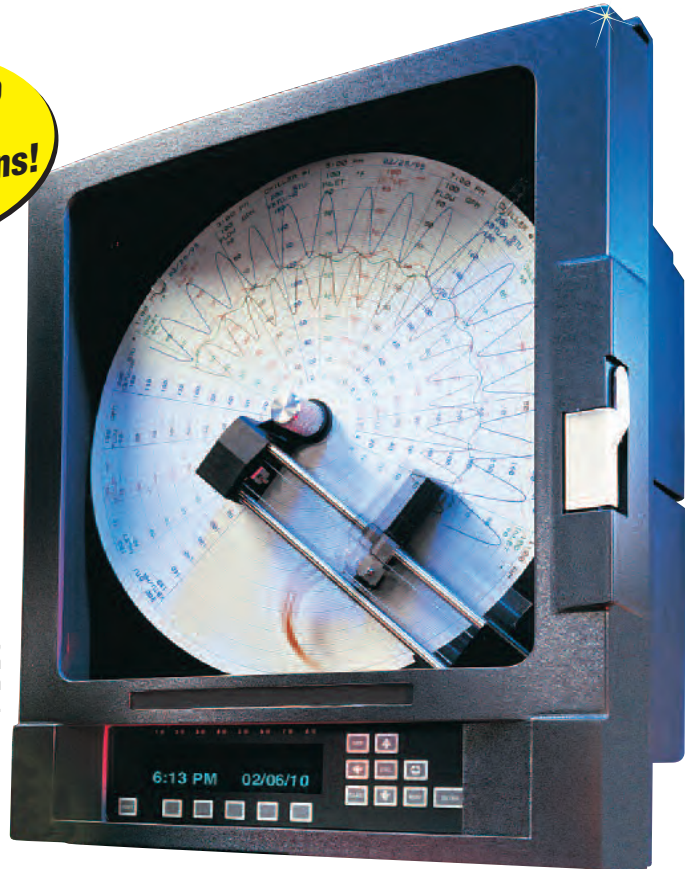


Microprocessor-Based Circular Chart Recorders

CT9000 Series
Starts at
\$2137



**Remember to
Order Extra
Paper and Pens!**



CT9144,
\$3453, shown
smaller than
actual size.

- ✓ 1-, 2-, 3-, or 4-Pen Version
- ✓ Programmable for 254, 280, or 305 mm (10, 11, or 12") Charts
- ✓ Accepts Thermocouple, RTD, V, mV, mA, or Switch Signals
- ✓ 40-Character Display
- ✓ Up to 4 Alarms per Variable
- ✓ 16 Profiles

The CT9000 microprocessor-based circular recorder offers 1 to 4 trends with 1 color per channel. The latter allows future trend addition upgrades and improves chart annotation of times, dates, scale values, trend line tags, and user-configurable real-time actuated chart messages. This instrument can accept up to 8 inputs. Some inputs do not have to be associated with the trend pens (i.e., display only). Up to 4 process values can be displayed at one time on the 40-character vacuum fluorescent display (2 lines of 20 characters each). Full English prompts allow easy configuration. With the recorder's proven dotting head print technology, there is no time difference between trend lines. This feature, along with the straight radial time line (compared with the curved lines on other recorders) allows for more accurate reading of data. The unit uses plain paper charts with pre-printed rings to further enhance readability and provide better long-term storage.

Specifications

General

T/C Accuracy: Typically 1°C (1.8°F)
Chart Accuracy: 0.3% of span
Chart Rotation Accuracy: 0.2 minutes for 24 hours
Ambient Temperature Error: ±0.01% of span per °C (1.8°F) deviation from 25°C (77°F)
Isolation: 500 Vdc/350 Vac
CMR: 120 dB minimum
NMR: 100 dB @ 60 Hz or greater
Scan Rate: 2 scans/s on each input
Operating Temperature: 0 to 50°C (32 to 122°F)
Storage Temperature: -40 to 65°C (-40 to 149°F)
Humidity: 10 to 90% RH, non-condensing
Vibration: 0.3 to 100 Hz @ 0.2 g

Line Voltage: 90 to 264 Vac, 50/60 Hz

Power Consumption: 60 VA max

Enclosure: Gasketed cover, case and window.

NEMA Rating: NEMA 3 (IP54)

Mounting: Panel or optional wall mounting

Mounting Position:

Up to 30° forward or backward tilt from vertical; up to 10° side tilt from vertical

Overall Dimensions:

358.65 W x 425.96 H x 196.85 mm D

(14.12 x 16.77 x 7.75")

Panel Cutout: 322.58 W x

322.58 mm H (12.7 x 12.7")

Panel Depth: 133.35 mm (5.25")

Panel Protrusion: 63.5 mm (2.5")

Weight: 11.34 kg (25 lb)

Clock Accuracy: 1 min/month typically,

4 min/month worst case

Battery Backup: 5 years min,

10 years typically; lithium battery

(included)

Operator Interface

Display: 2-line, 40-character VFD with

5 mm (0.21") high characters

Status Indicator: 8 user configurable,

red LED status indicator

Keypad: 15 keys for programming and

unit operation

Display Formats: 3

Operator Messages: 12

Operator Inputs: 12

Recording

Pen Type: Disposable 4-pen fiber-tip

marker assembly

Pen Colors: Red, green, blue, black

Chart Drive: DC stepper motor

Chart Size: Programmable for

10-, 11- or 12-inch charts (12-inch

charts are actually 11.875")

Chart Rotation:

6 to 9999 hours per revolution

Recorded Values: Any of over 20 values

can be trended/recorded

Recording Methods:

Drag pen simulation, instantaneous

value, connect the values, average

value, connect the averages

Action on New Chart: Print scales and

range list, begin normal recording

Chart Messages: 12

Input Ranges

Thermocouple

J: -200 to 1200°C (-328 to 2192°F)

K: -250 to 1370°C (-418 to 2498°F)

E: -250 to 1000°C (-418 to 1832°F)

N: -250 to 1300°C (-418 to 2372°F)

T: -250 to 400°C (-418 to 752°F)

R: 200 to 1700°C (392 to 3092°F)

S: 250 to 1750°C (482 to 3182°F)

B: 200 to 1800°C (392 to 3272°F)

G: 0 to 2300°C (32 to 4172°F)

C: 0 to 2300°C (32 to 4172°F)

D: 0 to 2300°C (32 to 4172°F)

NNM: 0 to 1370°C (32 to 4172°F)

PLATINEL II: 0 to 1400°C (32 to 2552°F)

RTD: -200 to 480°C (-328 to 896°F)

100 Ω platinum with 385 curve 2- or

3-wire, also available with 392 curve

or 100 Ω nickel

Volts DC: To 25 mV, 0 to 100 mV,

0 to 1V, 0 to 10V

mA DC: 0 to 20 mA or 4 to 20 mA with internal 50 Ω shunt

Contact Closure:

Open/closed switch sensing without external voltages or resistors

Processing: Square root and exponential functions for linear inputs

Value Cutoff: None, at value, to zero below value, to zero near zero

Measurement Error: ±0.025% of measurement span reference accuracy

Cold-Junction Compensation

Accuracy: ±0.2°C @ 25°C

(±0.36°F @ 77°F)

Cold-Junction Compensation

Rejection:

0.04%/° deviation from 25°C (77°F)

Thermocouple Linearization Error:

±0.25°C (1.45°F) typical, ±0.5°C (0.9°F) worst case with exceptions; RTD:

±0.1°C (0.18°F) typical, ±0.3°C (0.54°F) worst case

Sensor Fault Detection: Sensor break

on all T/Cs, RTDs, 1V, 1 to 5V, 4 to 20 mA and mV ranges; sensors high and low on all inputs, 5% above or below range

Sensor Break: Up-scale or down-scale

On/Off Outputs

On/Off Actuators:

Any of over 100 digital values/states can be used to actuate on/off outputs

Relays: SPDT contacts rated

5 A resistive @ 115 Vac

Solid State Relays:

Open-collector output, can provide

40 mA @ 3 Vdc or 20 mA @ 4 Vdc

Pulsed Outputs: 50 ms pulse when

used with totalizer pulsed outputs

Current Outputs

Drivers: Any of 20 values can be used

to drive analog outputs

Output Span:

To 20 mA or 4 to 20 mA, nominal

Resolution:

12 bits based on 0 to 25.6 mA span

Accuracy: ±0.1% of 20 mA span

Compliance: 650 Ω load

Totalizers:

Number: 4 are included in the option

Digits: 9, displayable with or

without commas

Types: Continuous, prelude count

down, and pulse counting

Presets: 1 per totalizer

Pulsed Outputs: Fully configurable

computing capabilities

Derived Variables: 12

Math Functions: Add, subtract,

multiply, divide, average, exponential,

log 10, log e, power 10, power e

Built-In Equations: Linear, polynomial,

°C to °F, °F to °C, linear mass flow, DP

mass flow, BTU, RH, F_O, ZrO₂

Other Functions: High select, low

select, high peak, low peak, track and

hold, 1 of 2 selector, convert actuator

Custom Curves: Four 20-point curves,

usable in multiple calculations

Logic Capabilities

Actuators:

Over 100 digital values are accessible

Derived Actuators:

24 combinations of 24 items

Logic Operators:

NOT, OR, AND, parentheses

Timers: 4

Time/Date Combination Actuators: 6

Alarms

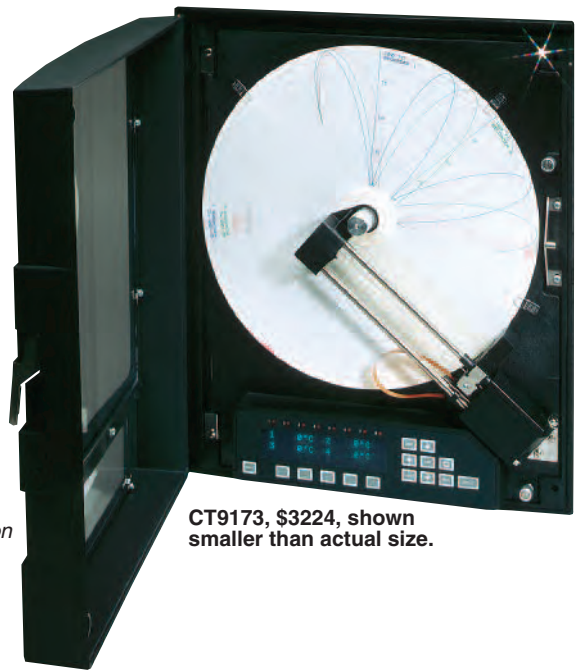
Number: Up to 4 alarms for each of 4 process variables

Type: Process high or low, rate rising or falling

Hysteresis: Fully adjustable



OMEGACARESM extended warranty program is available for models shown on this page. Ask your sales representative for full details when placing an order. OMEGACARESM covers parts, labor and equivalent loaners.



CT9173, \$3224, shown smaller than actual size.

MOST POPULAR MODELS HIGHLIGHTED

To Order (Specify Model Number)		
Model No.*	Price	Description
CT9111	\$2137	1-pen, 1-color recorder with 1 input
CT9122	2507	2-pen, 2-color recorder with 2 inputs
CT9133	2951	3-pen, 3-color recorder with 3 inputs
CT9144	3453	4-pen, 4-color recorder with 4 inputs
CT9151	2765	1-pen, 4-color recorder with 1 input
CT9162	2995	2-pen, 4-color recorder with 2 inputs
CT9173	3224	3-pen, 4-color recorder with 3 inputs

Options

Order Suffix	Price	Description
-AL**	Below	2, 4, 6 or 8 relay outputs
-SR**	Below	2, 4, 6 or 8 SSRs
-MA1	\$184	One 4 to 20 mA output
-MA2	368	Two 4 to 20 mA outputs
-MT1	265	Math (computing and logic capabilities)
-MT2	250	Totalizer
-MT3	500	Math and totalizer
-EN3	40	Plastic window (glass is standard)

** Number of relays or SSRs and prices respectively: 2: \$140; 4: \$240; 6: \$380; 8: \$480. Total relays and SSRs may not exceed 8.

Accessories

Model No.	Price	Description
CT9000C-RC-GR	\$48	Pen cartridge—green/red
CT9000C-RC-GRB	52	Pen cartridge—green/red/blue
CT9000C-RC-GRBB	56	Pen cartridge—green/red/blue/black
CT9000C-12-100	28	Paper, 305 mm (12"), 100 div. 100 sheets
CT9000C-12-70	21	Paper, 305 mm (12"), 70 div. 100 sheets
CT9000C-10-100	18	Paper, 254 mm (10"), 100 div. 100 sheets
CT9000C-11-100	19	Paper, 280 mm (11"), 100 div. 100 sheets
CT9000-WALL	24	Wall mounting brackets

Comes complete with a package of charts, pen cartridge and operator's manual.

Ordering Examples: CT9111, single-pen programmable recorder, \$2137.

* For additional universal inputs, change last digit of base number to 2, 3, 4, 6, or 8, representing the total number of inputs, and add \$210 per input beyond standard number offered (e.g., CT9144, 4-pen recorder with 4 inputs, \$3453. OCW-1 OMEGACARESM extends standard 2-year warranty to a total of 3 years (\$150), \$3453 + 150 = \$3603. CT9151, 1-pen, 4-color recorder, \$2765.



UNITED STATES

www.omega.com
1-800-TC-OMEGA
Stamford, CT.

CANADA

www.omega.ca
Laval(Quebec)
1-800-TC-OMEGA

GERMANY

www.omega.de
Deckenpfronn, Germany
0800-8266342

UNITED KINGDOM

www.omega.co.uk
Manchester, England
0800-488-488

FRANCE

www.omega.fr
Guyancourt, France
088-466-342

CZECH REPUBLIC

www.omegaeng.cz
Karviná, Czech Republic
596-311-899

BENELUX

www.omega.nl
Amstelveen, NL
0800-099-33-44



More than 100,000 Products Available!

• Temperature

Calibrators, Connectors, General Test and Measurement Instruments, Glass Bulb Thermometers, Handheld Instruments for Temperature Measurement, Ice Point References, Indicating Labels, Crayons, Cements and Lacquers, Infrared Temperature Measurement Instruments, Recorders Relative Humidity Measurement Instruments, RTD Probes, Elements and Assemblies, Temperature & Process Meters, Timers and Counters, Temperature and Process Controllers and Power Switching Devices, Thermistor Elements, Probes and Assemblies, Thermocouples Thermowells and Head and Well Assemblies, Transmitters, Wire

• Flow and Level

Air Velocity Indicators, Doppler Flowmeters, Level Measurement, Magnetic Flowmeters, Mass Flowmeters, Pitot Tubes, Pumps, Rotameters, Turbine and Paddle Wheel Flowmeters, Ultrasonic Flowmeters, Valves, Variable Area Flowmeters, Vortex Shedding Flowmeters

• pH and Conductivity

Conductivity Instrumentation, Dissolved Oxygen Instrumentation, Environmental Instrumentation, pH Electrodes and Instruments, Water and Soil Analysis Instrumentation

• Data Acquisition

Auto-Dialers and Alarm Monitoring Systems, Communication Products and Converters, Data Acquisition and Analysis Software, Data Loggers Plug-in Cards, Signal Conditioners, USB, RS232, RS485 and Parallel Port Data Acquisition Systems, Wireless Transmitters and Receivers

• Pressure, Strain and Force

Displacement Transducers, Dynamic Measurement Force Sensors, Instrumentation for Pressure and Strain Measurements, Load Cells, Pressure Gauges, Pressure Reference Section, Pressure Switches, Pressure Transducers, Proximity Transducers, Regulators, Strain Gages, Torque Transducers, Valves

• Heaters

Band Heaters, Cartridge Heaters, Circulation Heaters, Comfort Heaters, Controllers, Meters and Switching Devices, Flexible Heaters, General Test and Measurement Instruments, Heater Hook-up Wire, Heating Cable Systems, Immersion Heaters, Process Air and Duct, Heaters, Radiant Heaters, Strip Heaters, Tubular Heaters