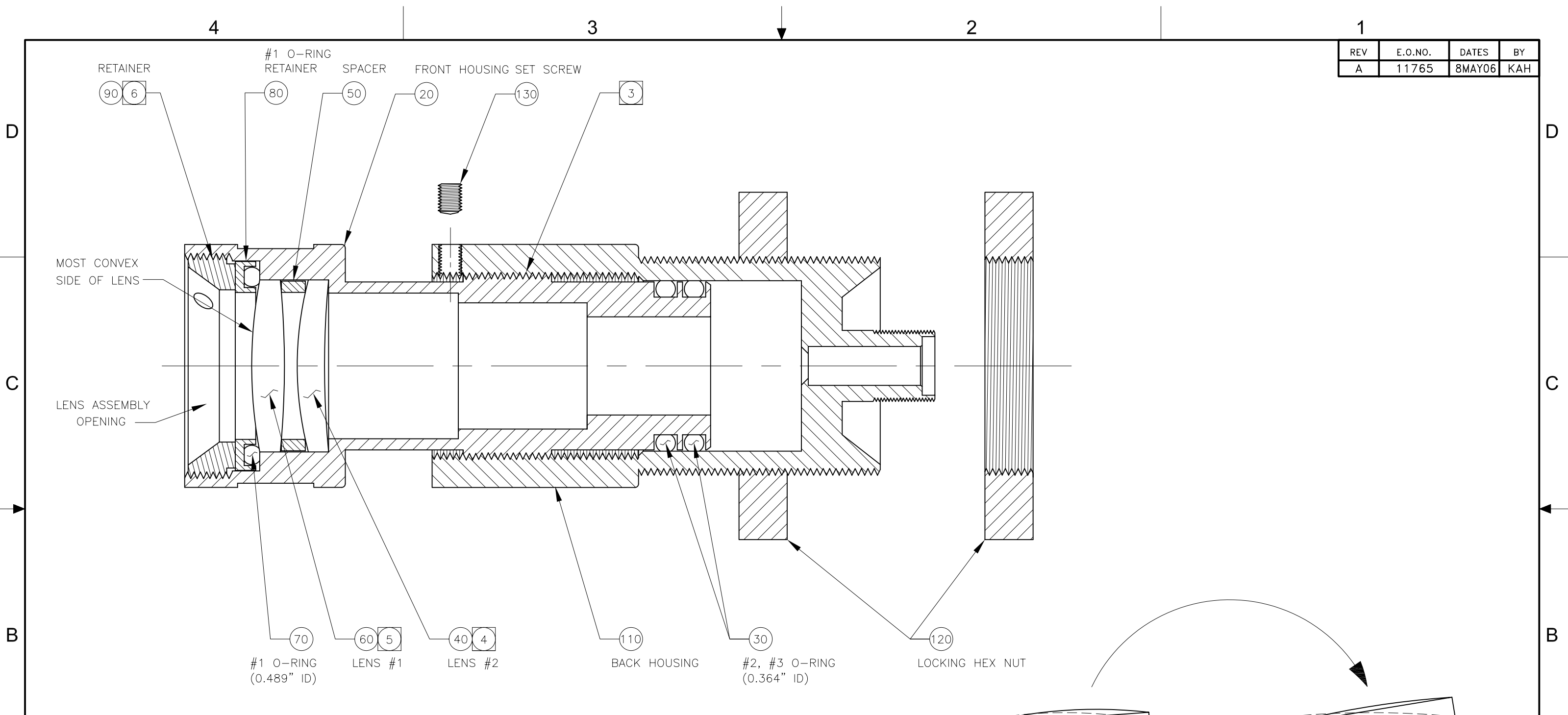


REV	E.O.NO.	DATES	BY
A	11765	8MAY06	KAH



6 HAND TIGHTEN LOCKING RETAINER, THEN TIGHTEN AN ADDITIONAL 1/4 TURN USING LOCKING RETAINER TOOL.

5 DETERMINE WHICH SIDE OF LENS MORE CONVEX (SEE DETAIL A). PLACE LENS ON A MIRROR AND PRESS ONE SIDE DOWN WHILE OBSERVING THE ANGLE TILTED UP. TURN LENS OVER AND REPEAT. THE SIDE WITH THE GREATEST ANGLE SHOWS THAT THE MORE CONVEX SIDE IS FACING DOWN. INSTALL THAT SIDE FACING TOWARDS LENS ASSEMBLY OPENING.

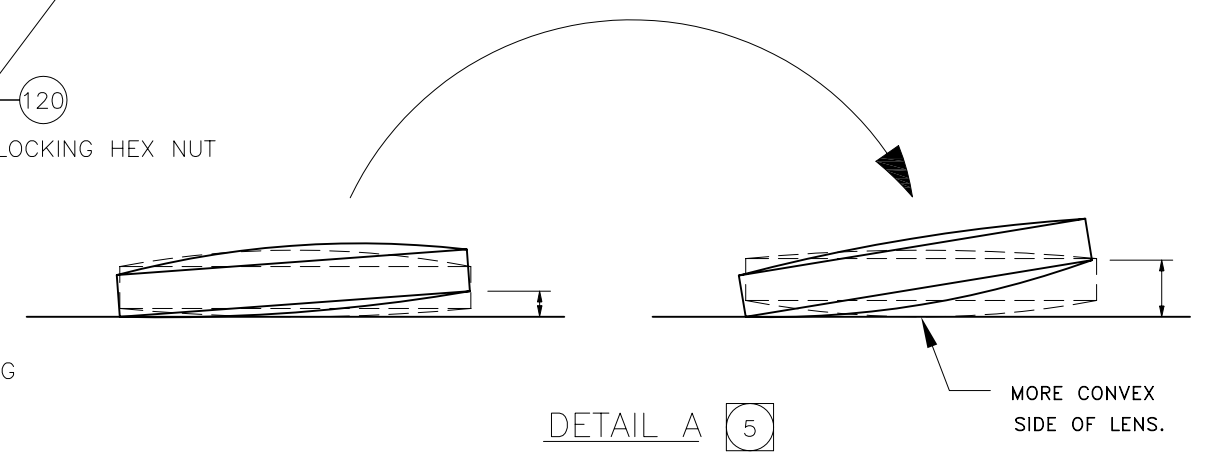
4 NOTE ORIENTATION OF LENS ELEMENT 2 (ITEM 40). FACE CONVEX (CURVED OUTWARD) SIDE TOWARDS LENS ASSEMBLY OPENING.

3 USE NORTON FLOROGLIDE ON THREADS OF FRONT HOUSING (ITEM 20) AND O-RINGS (ITEM 30).

2. USE LATEX GLOVES DURING ASSEMBLY. LENSES TO BE CLEANED AND INSTALLED FREE OF FINGERPRINTS.

1. NO NOTE.

NOTES: UNLESS OTHERWISE SPECIFIED



UNLESS SPECIFIED DIM TOLERANCES ARE:	
MILLIMETERS:	.X = ±.5 .XX = ±.25
INCHES:	.XX = ±.02 .XXX = ±.010
ANGLES:	±0° 30'
DO NOT SCALE PRINT	

**PROPRIETARY NOTICE**  
THIS DRAWING IS PROPRIETARY TO NEWPORT ELECTRONICS, INC. AND IS SUPPLIED IN CONFIDENCE FOR A PARTICULAR LIMITED PURPOSE ONLY AND RECIPIENT HEREOF IS NEITHER AUTHORIZED TO REPRODUCE THIS DRAWING NOR MAKE THE STRUCTURE DISCLOSED THEREIN NOR DISCLOSE ITS CONTENTS TO OTHERS NOR USE IT IN ANY OTHER WAY WHETHER IN WHOLE OR PART UNLESS PRIOR WRITTEN APPROVAL THEREFOR IS OBTAINED FROM NEWPORT.

TITLE	
ASSY, IR2C/iR2P, OPTICAL LENS	
SIZE	CODE IDENT NO. DRAWING NO.
B	32873 14455MD-01
SCALE	MODEL MULTI SHEET 1 OF 1
<b>NEWPORT</b> Electronics, Inc. 2229 SOUTH YALE STREET, SANTA ANA, CA 92704-4426	