



Electrode Selection Guide

An introduction to and explanation of the basic types of electrode:

1.) Combination or Electrode Pair

Combination



Best electrode for most laboratory or field applications with exceptions noted below. Most popular type.



Electrode Pair

Best choice for following special applications:

1. Colloidal suspensions
2. Samples containing iodides
3. Samples that are high in solids
4. Viscous solutions
5. Samples requiring specific ion determinations

3.) Junction type

Single Junction Ag/AgCl (Silver-Based)



Best electrode for most laboratory or field applications with exceptions noted below.



Double Junction

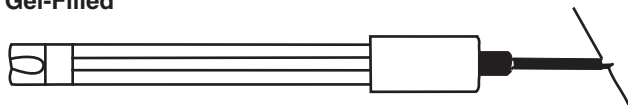
Used when samples react with the silver in an Ag/AgCl electrode. Best choice for solutions containing:

1. Proteins, sulfides or heavy metal ions
2. Strong reducing ions
3. Tris buffer

Ag/AgCl double junction electrodes now offer the same advantage as Calomel (Hg/HgCl) electrodes, without the latter's heat stability limitations.

2.) Fill Solution (Gel-Filled or Refillable)

Gel-Filled



Need almost no maintenance. Polymer body for high durability. Moderate accuracy (± 0.05 pH units). Limited life (6 months to 1 year). Should not be immersed for long periods of time. Most often used for field or industrial applications.



Refillable

1. Higher maintenance
2. Glass body, typically
3. High accuracy (± 0.01 pH unit)
4. Longer Life (1 year or more)
5. Most often used in laboratory applications

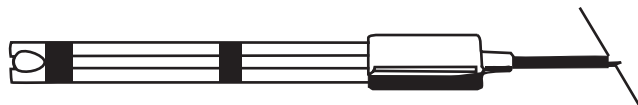
4.) Body Construction (Glass, Epoxy or Polymer)

Glass Body



Most often used in laboratory applications. Best choice for solutions containing:

1. Proteins and other compounds with high surface tension
2. Highly corrosive materials
3. Organics or solvents which might attack epoxy



Epoxy or Polymer Body

More durable than glass. Best electrode for most field applications. Usually gel-filled.



Electrode Selection Guide

In order to select the proper electrode for a particular application, the following parameters should be evaluated:

Considerations	Explanation
Physical Dimensions of Electrode and Bulb	Electrodes are available in various lengths and bulb shapes for different uses such as general purpose, in test tubes, on flat surfaces or for puncturing soft, moist surfaces.
Type of Sample	If sample will react with Ag/AgCl reference, Double Junction reference should be used.
Type of Liquid Junction	Any ceramic, PTFE or polypropylene junction can be used for most applications. The types are: Pin Ceramic—low junction flow rate. Annular or Coaxial Ceramic—higher flow rate with greater surface area to prevent clogging. PTFE or polypropylene—higher flow rate, hard to clog. Sleeve junction—highest flow rate for hard-to-measure or easily clogging samples such as high purity water or dirty, viscous samples.
pH of Sample	At high pH (>12), special glass may be required to minimize error due to interference by sodium ions. High pH glass can be used over the entire pH scale, but has a higher resistance than standard glass.
Resistance of Electrode	The higher the resistance of the electrode, the more difficult it is to get a proper measurement. Meters with an input impedance of at least $10^{12} \Omega$ should be used whenever possible. The input impedance of the meter should be greater than 1000 times the resistance of the electrode. Resistance of electrodes doubles for every 8°C (14°F) drop in temperature; therefore, at low temperatures, this can become important.
Connector and Cable Length	Standard OMEGA® electrodes come with a BNC or U.S. standard connector and between 0.75 to 1 meter (2½ to 3') of cable. Make sure this is compatible with the meter you are using. If not, adaptors and other cable lengths are available.
Mounting	Electrodes should be mounted vertically into the sample if possible. Do not mount less than 15° from horizontal.

Ordering Information and Examples (using PHE-1311 electrode, shown on page C-13)

Standard electrode configuration: 1 m (3') cable with either BNC-type connector (e.g., PHE-1311, \$52) or U.S. standard connector, add ordering suffix “-U”. (e.g., PHE-1311-U, electrode and cable, \$64)

To order electrodes with cables longer than 1 m (3'), add total desired length in feet to Model number, and add \$1 to price for each additional foot (e.g., PHE-1311-5, \$61)

To order electrodes with detachable cable connector, add suffix “-D” to Model number and add \$5 to price (e.g., PHE-1311-D, \$62). See page C-13 for mating cables.

Note: Longer production lead time is required for non-standard electrode configurations.

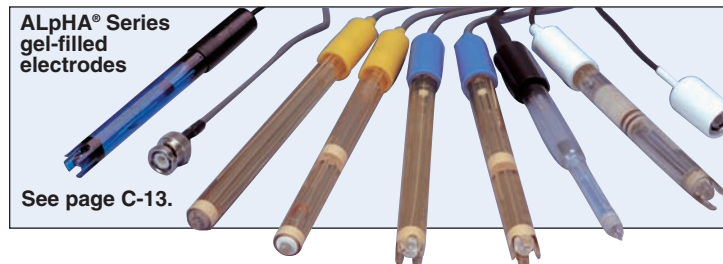


Introduction to Electrode Selection

With so many electrodes available, how do I select the right one for my application?

One group or even a few electrodes cannot fill all the various applications that may be encountered.

The first question to ask is where will the electrode be used? Is it for the laboratory, the field or an industrial process environment? Once that is answered, then the physical dimensions of the electrode and the bulb style must be chosen. Electrodes are available in various lengths and bulb shapes for different uses, such as general purpose, test tubes, flat surfaces or puncturing moist surfaces. Also, if it is an industrial electrode, the proper mounting configuration must be chosen, such as insertion or submersion.



ALpHA® Series gel-filled electrodes

See page C-13.

What other parameters do I need to consider in choosing the proper electrode?

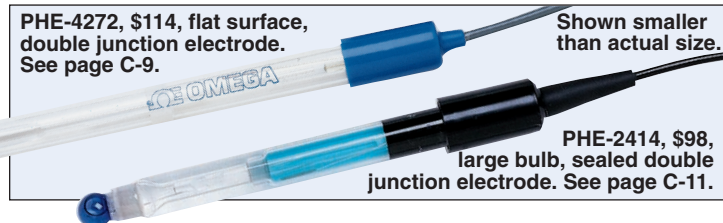
The first choice to make is whether to use a combination electrode or an electrode pair. A combination electrode is best for most laboratory or field applications, with certain exceptions. It is the most popular type of electrode and the easiest to use. An electrode pair is the better choice for dealing with: 1) colloidal suspensions, 2) iodides in the sample, 3) high percentage of solids in the fluid, 4) viscous solutions, 5) making specific ion determinations, and 6) high purity water.

What are an electrode pair and a combination electrode?

An electrode pair consists of two electrodes: the reference electrode and the measuring electrode. A combination electrode combines these two elements into one electrode. All pH measurements are made using either an electrode pair or a combination electrode.

What are gel-filled and refillable electrodes?

Electrodes are either refillable or gel-filled. Gel-filled electrodes require almost no maintenance, and their polymer bodies exhibit excellent durability. However, gel fills also have only moderate accuracy (± 0.05 pH units) and a limited life span (6 months to 1 year). They should not be immersed for long periods of time. Refillable electrodes require periodic refilling with an appropriate filling solution. They require higher maintenance, typically have breakable glass bodies, but also have higher accuracy (± 0.01 pH unit), longer life, and are most often used in laboratory applications.



PHE-4272, \$114, flat surface, double junction electrode. See page C-9.

Shown smaller than actual size.

PHE-2414, \$98, large bulb, sealed double junction electrode. See page C-11.

How do I select the electrode's body construction?

The glass body electrode is most often used in laboratory applications. It is the best choice for solutions containing proteins and other compounds with high surface tension, highly corrosive materials, and organics or solvents which might attack a polymer body. Polymer-bodied electrodes are more durable than glass ones. They are the better choice for field applications and are most often gel-filled.

What is the junction of an electrode?

The junction of a reference electrode or combination electrode is a permeable membrane through which a filling solution slowly escapes (called the liquid junction). The junction can come in several forms, but its principal function is to allow small quantities of the reference electrode's fill solution to slowly leak or migrate into the sample being measured.

What are the types of junctions and how do I select among them?

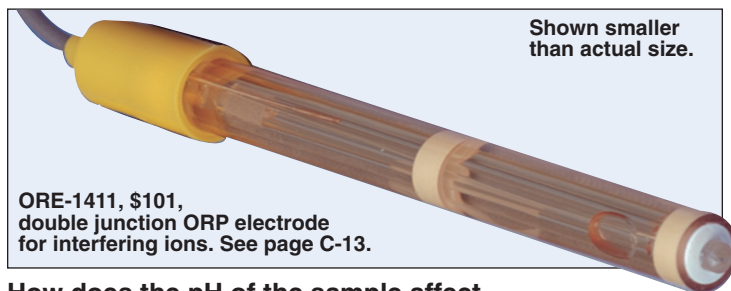
Electrodes can use either single, double or triple junctions. **Single junction** electrodes with Ag/AgCl internal components are the best electrodes for many field or laboratory applications with the exceptions noted below. **Double junction** or **triple junction** electrodes provide protection when used with samples that can react with the silver in Ag/AgCl electrodes. They are the best choice for solutions containing proteins, sulfides, heavy metal ions, strong reducing ions, or tris buffers. If you're in doubt, a double junction should be used. See page C-3 for sample illustrations.

Pin ceramic — low flow rate.

Annular or coaxial ceramic — higher flow rate with greater surface area to prevent clogging.

Fluorocarbon polymer — higher flow rate, hard to clog.

Sleeve junction — highest flow rate for hard-to-measure or easily clogging samples such as high purity water or dirty, viscous samples.



Shown smaller than actual size.

ORE-1411, \$101, double junction ORP electrode for interfering ions. See page C-13.

How does the pH of the sample affect electrode selection?

At high pH (>12), special glass may be required to minimize error due to interference by sodium ions. Such high pH glass can be used over the entire pH scale, but it has a higher resistance than does standard glass.

What are the various types of connectors that are available on electrodes?

The main connectors available are BNC and U.S. standard connectors. Make sure that the connectors are compatible with the meter that you are using. If not, adaptors for other connector and meter types are available.

Note: For more information and assistance with your selection, contact OMEGA's pH Engineering Department.



UNITED STATES

www.omega.com
1-800-TC-OMEGA
Stamford, CT.

CANADA

www.omega.ca
Laval(Quebec)
1-800-TC-OMEGA

GERMANY

www.omega.de
Deckenpfronn, Germany
0800-8266342

UNITED KINGDOM

www.omega.co.uk
Manchester, England
0800-488-488

FRANCE

www.omega.fr
Guyancourt, France
088-466-342

CZECH REPUBLIC

www.omegaeng.cz
Karviná, Czech Republic
596-311-899

BENELUX

www.omega.nl
Amstelveen, NL
0800-099-33-44



More than 100,000 Products Available!

• Temperature

Calibrators, Connectors, General Test and Measurement Instruments, Glass Bulb Thermometers, Handheld Instruments for Temperature Measurement, Ice Point References, Indicating Labels, Crayons, Cements and Lacquers, Infrared Temperature Measurement Instruments, Recorders Relative Humidity Measurement Instruments, RTD Probes, Elements and Assemblies, Temperature & Process Meters, Timers and Counters, Temperature and Process Controllers and Power Switching Devices, Thermistor Elements, Probes and Assemblies, Thermocouples Thermowells and Head and Well Assemblies, Transmitters, Wire

• Flow and Level

Air Velocity Indicators, Doppler Flowmeters, Level Measurement, Magnetic Flowmeters, Mass Flowmeters, Pitot Tubes, Pumps, Rotameters, Turbine and Paddle Wheel Flowmeters, Ultrasonic Flowmeters, Valves, Variable Area Flowmeters, Vortex Shedding Flowmeters

• pH and Conductivity

Conductivity Instrumentation, Dissolved Oxygen Instrumentation, Environmental Instrumentation, pH Electrodes and Instruments, Water and Soil Analysis Instrumentation

• Data Acquisition

Auto-Dialers and Alarm Monitoring Systems, Communication Products and Converters, Data Acquisition and Analysis Software, Data Loggers Plug-in Cards, Signal Conditioners, USB, RS232, RS485 and Parallel Port Data Acquisition Systems, Wireless Transmitters and Receivers

• Pressure, Strain and Force

Displacement Transducers, Dynamic Measurement Force Sensors, Instrumentation for Pressure and Strain Measurements, Load Cells, Pressure Gauges, Pressure Reference Section, Pressure Switches, Pressure Transducers, Proximity Transducers, Regulators, Strain Gages, Torque Transducers, Valves

• Heaters

Band Heaters, Cartridge Heaters, Circulation Heaters, Comfort Heaters, Controllers, Meters and Switching Devices, Flexible Heaters, General Test and Measurement Instruments, Heater Hook-up Wire, Heating Cable Systems, Immersion Heaters, Process Air and Duct, Heaters, Radiant Heaters, Strip Heaters, Tubular Heaters